



**ARGENTINA**

---

# **TIERRA DEL FUEGO**

---

**NDPBA PROVINCE PROFILE**

# ARGENTINA

## TIERRA DEL FUEGO

**CAPITAL: USHUAIA**

Area: 20,920 km<sup>2</sup>

Tierra del Fuego Province is located in the Patagonia region of Argentina. This Province is divided into 5 Provinces, the Capital being Tierra del Fuego. The Province borders Chile. The main economic sources are tourism, fishing, manufacturing, livestock, agriculture, petroleum and gas.



### RISK AND VULNERABILITY COMPONENT SCORE



**MULTI-HAZARD RISK (MHR) - Very Low**

Score: 0.39 • Rank: 23/24



**RESILIENCE (R) - Very High**

Score: 0.542 • Rank: 2/24



**MULTI-HAZARD EXPOSURE (MHE) - Very Low**

Score: 0.253 • Rank: 21/24



**VULNERABILITY (V) - Very Low**

Score: 0.411 • Rank: 23/24



**COPING CAPACITY (CC) - High**

Score: 0.494 • Rank: 9/24



Population (2018)

**1,654,388**



Population in Poverty

**17.9%**



Illiterate population

**0.7%**



Access to improved water

**94.2%**



Average life expectancy

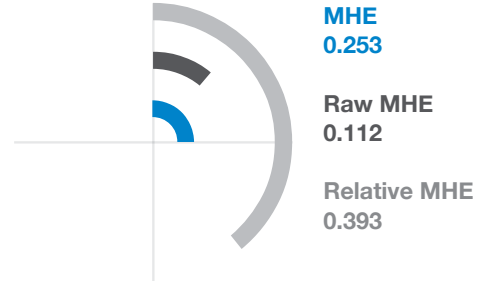
**77.0 years**

\*For more information on data and components please visit: <https://bit.ly/2LqVoUO>

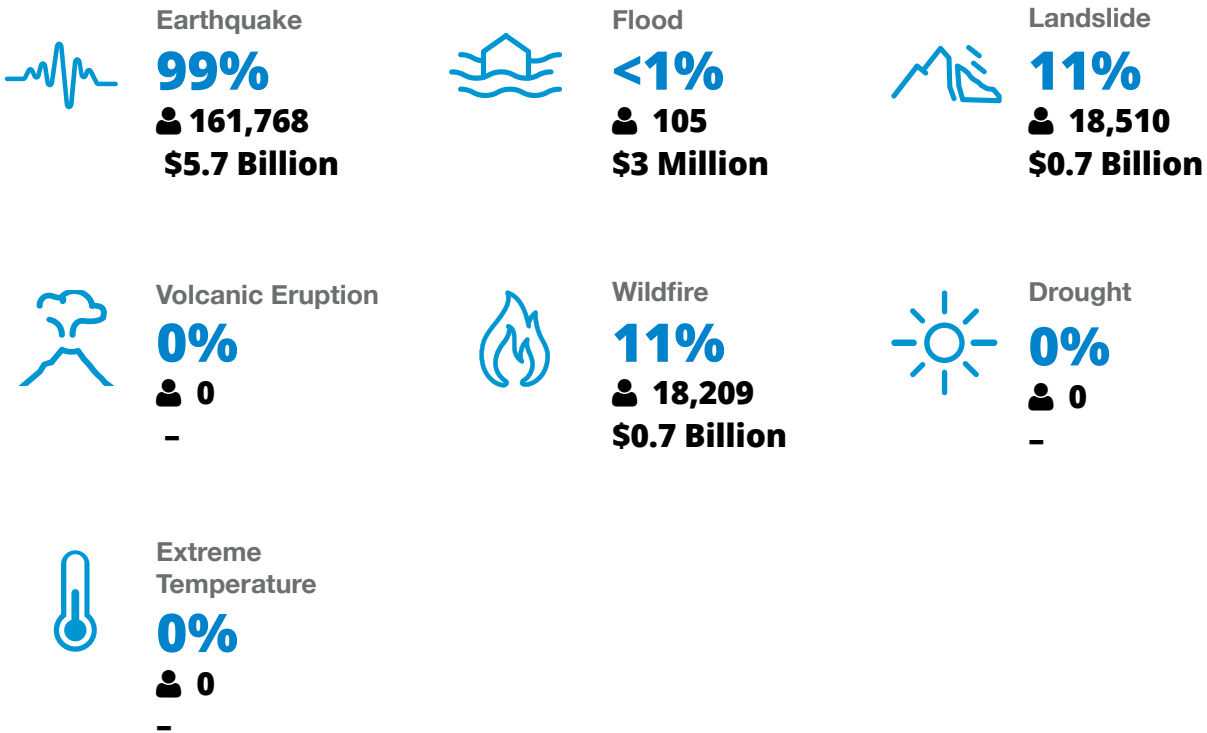


## MULTI-HAZARD EXPOSURE (MHE)

RANK: 21 / 24 PROVINCES  
SCORE: 0.253



### ESTIMATED POPULATION AND CAPITAL EXPOSED TO EACH HAZARD:





## VULNERABILITY (V)

**RANK: 23 / 24 PROVINCES ASSESSED**  
**SCORE: 0.411**

Vulnerability in Tierra del Fuego is primarily driven by Population Pressures and Gender Inequality. The bar chart indicates the socioeconomic themes contributing to the province's overall Vulnerability score.



### Environmental Stress

**SCORE: 0.137 RANK: 24/24 PROVINCES ASSESSED**

**3.0%** **0**  
Land degradation Land affected by wildfire (per 100k ha)



### Vulnerable Health Status

**SCORE: 0.163 RANK: 24/24 PROVINCES ASSESSED**

**77** **6.7** **3.5** **9.8%** **26.2** **6.2**  
Life expectancy (years) Infant mortality rate (per 1,000 live births) Maternal mortality ratio Disability HIV incidence Tuberculosis incidence



### Clean Water Vulnerability

**SCORE: 0.153 RANK: 22/24 PROVINCES ASSESSED**

**5.8%** **10.7%**  
Households without piped water Households without sewage services



### Information Access Vulnerability

**SCORE: 0.333 RANK: 21/24 PROVINCES ASSESSED**

**0.7%** **81.2%** **96.9%** **2.31**  
Illiteracy Rate (Age 10+) Secondary education completion rate School enrollment Education investment per capita (million pesos)



### Economic Constraints

**SCORE: 0.237 RANK: 23/24 PROVINCES ASSESSED**

**43.9** **6.3%** **17.9%**  
Economic dependency ratio Unemployment rate Poverty rate



### Gender Inequality

**SCORE: 0.876 RANK: 1/24 PROVINCES ASSESSED**

**2.04** **23.3**  
Female to male unemployment Female judiciary seats



### Population Pressures

**SCORE: 0.979 RANK: 2/24 PROVINCES ASSESSED**

**3.1%**  
Average Annual population change



## COPING CAPACITY (CC)

**RANK: 9 / 24 PROVINCES ASSESSED**  
**SCORE: 0.494**

Tierra del Fuego exhibits weaker Coping Capacity in the areas of Transportation Capacity and Disaster Management Capabilities. The bar chart indicates the socioeconomic themes contributing to the province's overall Coping Capacity score.



### Economic Capacity

**SCORE: 0.541 RANK: 5/24 PROVINCES ASSESSED**

**913.7**

Exports per capita (USD)

**0.4%**

Work insurance coverage

**55.2**

Tax distribution



### Governance

**SCORE: 0.461 RANK: 19/24 PROVINCES ASSESSED**

**9.9**

Crime prevalence

**75.9%**

Voter participation



### Environmental Capacity

**SCORE: 0.444 RANK: 8/24 PROVINCES ASSESSED**

**13.7%**

Protected area

**34.0%**

Forest cover



### Infrastructure Capacity

**SCORE: 0.555 RANK: 7/24 PROVINCES ASSESSED**



### Health Care Capacity SCORE: 0.472 RANK: 12/24 PROVINCES ASSESSED

**23**

Hopital beds per 10,000 people

**53.1**

Physicians per 10,000 people

**78.5%**

Health insurance coverage

**91.3**

Average distance to nearest hospital (km<sup>2</sup>)



### Transportation Capacity SCORE: 0.201 RANK: 22/24 PROVINCES ASSESSED

**0.07**

Road density (km per sq. km)

**16.6**

Average distance to port (km)

**44.2%**

Proportion of roads improved



### Communications Capacity SCORE: 0.968 RANK: 1/24 PROVINCES ASSESSED

**74.6%**

Households with Internet

**27.1%**

Television subscriptions per 100 people



### Energy Capacity SCORE: 0.578 RANK: 14/24 PROVINCES ASSESSED

**93.8%**

Households with electricity

**78.4%**

Households with gas



### Disaster Management Capabilities

**SCORE: 0.442 RANK: 13/24 PROVINCES ASSESSED**

**86.2**

Distance to fire station (km)

**3.7**

Shelters per 100k persons

**46.2%**

Radiobase access



## RESILIENCE (R)

**RANK: 2 / 24 PROVINCES**  
**SCORE: 0.542**

Tierra del Fuego's score and ranking are due to Very Low Vulnerability combined with High Coping Capacity scores.

**Below are the four thematic areas with the weakest relative scores:**



**Population Pressures**



**Gender Inequality**



**Transportation Capacity**



**Disaster Management Capabilities**



## HAZARD-SPECIFIC RISK (HSR)



**Earthquake**

**RANK: 5 / 24 PROVINCES ASSESSED**  
**SCORE: 0.413**



**Wildfire**

**RANK: 20 / 24 PROVINCES ASSESSED**  
**SCORE: 0.100**



**Volcano**

**RANK: 9 / 24 PROVINCES ASSESSED**  
**SCORE: 0.000**



**Flood**

**RANK: 24 / 24 PROVINCES ASSESSED**  
**SCORE: 0.000**



**Landslide**

**RANK: 21 / 24 PROVINCES ASSESSED**  
**SCORE: 0.049**



**Drought**

**RANK: 22 / 24 PROVINCES ASSESSED**  
**SCORE: 0.000**



**Extreme Temperature**

**RANK: 14 / 24 PROVINCES ASSESSED**  
**SCORE: 0**



## MULTI-HAZARD RISK (MHR)

**23 / 24**

RANK WITHIN PROVINCES  
Score: 0.39

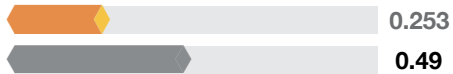


Tierra del Fuego's score and ranking are due to Very Low Multi-hazard exposure combined with Very Low Vulnerability and High Coping Capacity scores.

### Multi-hazard risk component scores compared to overall average country scores:



#### Multi-Hazard Exposure



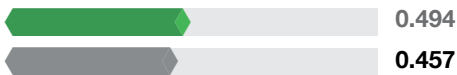
DISTRICT SCORE  
COUNTRY SCORE



#### Vulnerability



#### Coping Capacity



# TIERRA DEL FUEGO RECOMMENDATIONS

---

1

## Population Pressures

Tierra del Fuego Province experienced the 2nd largest average annual population increase between 2010 and 2019 (3.1%). As population growth steadily increases, closely monitor development to prevent environmental stress and ensure that resource and infrastructure needs are met.

Incorporate multi-hazard mapping and risk assessment into land-use plans and zoning regulations to reduce and prevent development in hazard-prone areas of the Province.

2

## Gender Inequality

Focus efforts to support equal labor participation by diversifying economic opportunities for women in the Province.

Promote social benefit programs that support single parents with children.

Encourage women to participate in the disaster management planning and decision-making process through inclusion community emergency brigades and representation in local government.



---

## TIERRA DEL FUEGO RECOMMENDATIONS

---

### 3

#### Transportation Capacity

Findings show that Tierra del Fuego Province ranks 22nd in Overall Transportation Capacity. Only 44% of roads are paved, and the Province exhibits the 3rd lowest road density in Argentina.

Invest in transportation infrastructure to facilitate the distribution of resources and services before, during, and after a disaster

### 4

#### Disaster Management Capabilities

Focus on building community and volunteer fire and emergency response corps. Identify government or external resources to conduct emergency services training and conduct Province-level exercise on a regular basis.

Pursue public-private partnerships to increase radiobase access to increase availability, security, and resilience of disaster communications.

**Better solutions.  
Fewer disasters.**

# Safer world.

**1305 N Holopono Street  
Suite 2, Kihei, HI 96753**

**P: (808) 891-0525  
F: (808) 891-0526**



**@PDC\_Global**



**/PDCGlobal**



**www.pdc.prg**



**ndpba.arg@pdc.org**