



ARGENTINA

SANTIAGO DEL ESTERO

NDPBA PROVINCE PROFILE

ARGENTINA

SANTIAGO DEL ESTERO

CAPITAL: SANTIAGO DEL ESTERO

Area: 136,911 km²

Santiago del Estero Province is located in the Noroeste Argentino (NOA) region of Argentina. This Province is divided into 27 Provinces, the Capital being Santiago del Estero. The Province borders the Provinces of Santa Fe, Chaco, Salta, Tucumán, Catamarca and Córdoba. The main economic sources are agriculture, livestock, lumber, some mining and tourism.



RISK AND VULNERABILITY COMPONENT SCORE



MULTI-HAZARD RISK (MHR) - Very High

Score: 0.607 • Rank: 3/24



RESILIENCE (R) - Very Low

Score: 0.407 • Rank: 21/24



MULTI-HAZARD EXPOSURE (MHE) - High

Score: 0.635 • Rank: 6/24



VULNERABILITY (V) - High

Score: 0.555 • Rank: 9/24



COPING CAPACITY (CC) - Very Low

Score: 0.369 • Rank: 21/24



Population (2018)

958,251



Population in Poverty

38.9%



Illiterate population

4.0%



Access to improved water

75.8%



Average life expectancy

74.3 years

*For more information on data and components please visit: <https://bit.ly/2LqVoUO>



MULTI-HAZARD EXPOSURE (MHE)

RANK: 6 / 24 PROVINCES
SCORE: 0.635

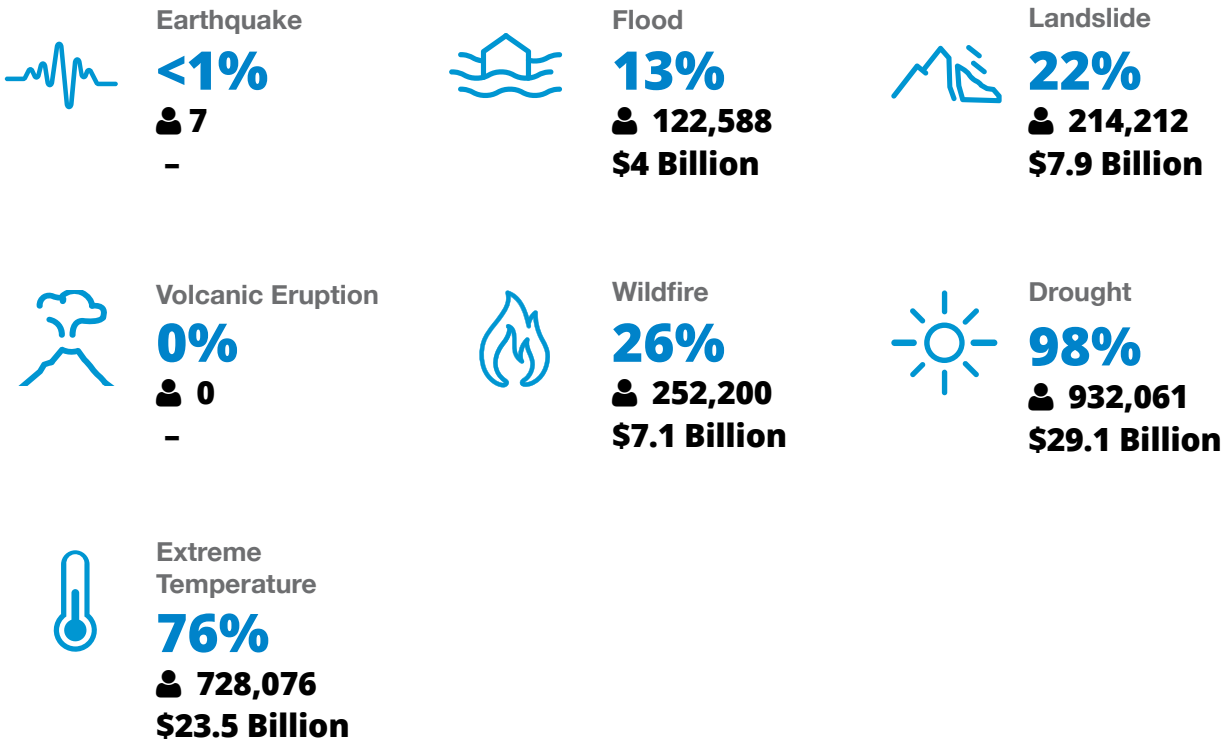


MHE
0.635

Raw MHE
0.464

Relative MHE
0.806

ESTIMATED POPULATION AND CAPITAL EXPOSED TO EACH HAZARD:





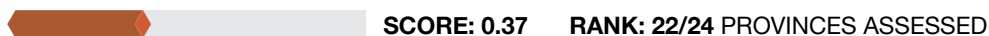
VULNERABILITY (V)

RANK: 9 / 24 PROVINCES ASSESSED
SCORE: 0.555

Vulnerability in Santiago del Estero is primarily driven by Clean Water Access Vulnerability and Economic Constraints. The bar chart indicates the socioeconomic themes contributing to the province's overall Vulnerability score.



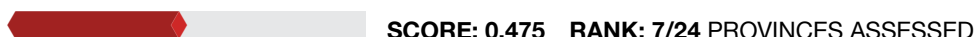
Environmental Stress



2.4% Land degradation
13.1 Land affected by wildfire (per 100k ha)



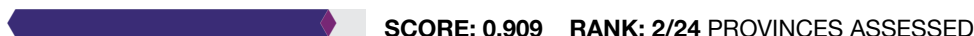
Vulnerable Health Status



74.3 Life expectancy (years)
10.7 Infant mortality rate (per 1,000 live births)
2.9 Maternal mortality ratio
16.2% Disability
3.9 HIV incidence
9.5 Tuberculosis incidence



Clean Water Vulnerability



24.2% Households without piped water
78.1% Households without sewage services



Information Access Vulnerability



4.0% Illiteracy Rate (Age 10+)
81.2% Secondary education completion rate
79.5% School enrollment
3.89 Education investment per capita (million pesos)



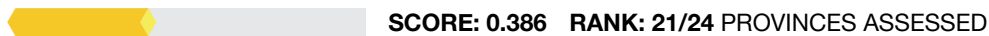
Economic Constraints



56.4 Economic dependency ratio
6.2% Unemployment rate
38.9% Poverty rate



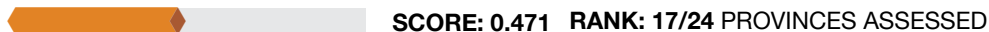
Gender Inequality



1.78 Female to male unemployment
47.4 Female judiciary seats



Population Pressures



1.1% Average Annual population change



COPING CAPACITY (CC)

RANK: 21 / 24 PROVINCES ASSESSED
SCORE: 0.369

Santiago del Estero exhibits weaker Coping Capacity in the areas of Energy Capacity and Communications Capacity. The bar chart indicates the socioeconomic themes contributing to the province's overall Coping Capacity score.



Economic Capacity

SCORE: 0.422 RANK: 12/24 PROVINCES ASSESSED

865.6 Exports per capita (USD)	0.8% Work insurance coverage	31.3 Tax distribution
--	--	---------------------------------



Governance

SCORE: 0.558 RANK: 9/24 PROVINCES ASSESSED

15.8 Crime prevalence	80.5% Voter participation
---------------------------------	-------------------------------------



Environmental Capacity

SCORE: 0.435 RANK: 9/24 PROVINCES ASSESSED

1.5% Protected area	52.1% Forest cover
-------------------------------	------------------------------



Infrastructure Capacity

SCORE: 0.295 RANK: 22/24 PROVINCES ASSESSED



Health Care Capacity SCORE: 0.301 RANK: 24/24 PROVINCES ASSESSED

38.2 Hospital beds per 10,000 people	19.6 Physicians per 10,000 people	44.1% Health insurance coverage	25.4 Average distance to nearest hospital (km ²)
--	---	---	--



Transportation Capacity SCORE: 0.649 RANK: 9/24 PROVINCES ASSESSED

0.30 Road density (km per sq. km)	17.9 Average distance to port (km)	96.9% Proportion of roads improved
---	--	--



Communications Capacity SCORE: 0.123 RANK: 22/24 PROVINCES ASSESSED

23.7% Households with Internet	11.3% Television subscriptions per 100 people
--	---



Energy Capacity SCORE: 0.107 RANK: 22/24 PROVINCES ASSESSED

86.5% Households with electricity	20.3% Households with gas
---	-------------------------------------



Disaster Management Capabilities

SCORE: 0.169 RANK: 22/24 PROVINCES ASSESSED

70.5 Distance to fire station (km)	0 Shelters per 100k persons	41.7% Radiobase access
--	---------------------------------------	----------------------------------



RESILIENCE (R)

RANK: 21 / 24 PROVINCES
SCORE: 0.407

Santiago del Estero's score and ranking are due to High Vulnerability combined with Very Low Coping Capacity scores.

Below are the four thematic areas with the weakest relative scores:



**Clean Water
Access
Vulnerability**



**Economic
Constraints**



Energy Capacity



**Communications
Capacity**



HAZARD-SPECIFIC RISK (HSR)



Earthquake

RANK: 10 / 24 PROVINCES ASSESSED
SCORE: 0.024



Wildfire

RANK: 12 / 24 PROVINCES ASSESSED
SCORE: 0.308



Volcano

RANK: 9 / 24 PROVINCES ASSESSED
SCORE: 0.000



Flood

RANK: 5 / 24 PROVINCES ASSESSED
SCORE: 0.343



Landslide

RANK: 8 / 24 PROVINCES ASSESSED
SCORE: 0.265



Drought

RANK: 4 / 24 PROVINCES ASSESSED
SCORE: 0.526



Extreme Temperature

RANK: 3 / 24 PROVINCES ASSESSED
SCORE: 0.462



MULTI-HAZARD RISK (MHR)

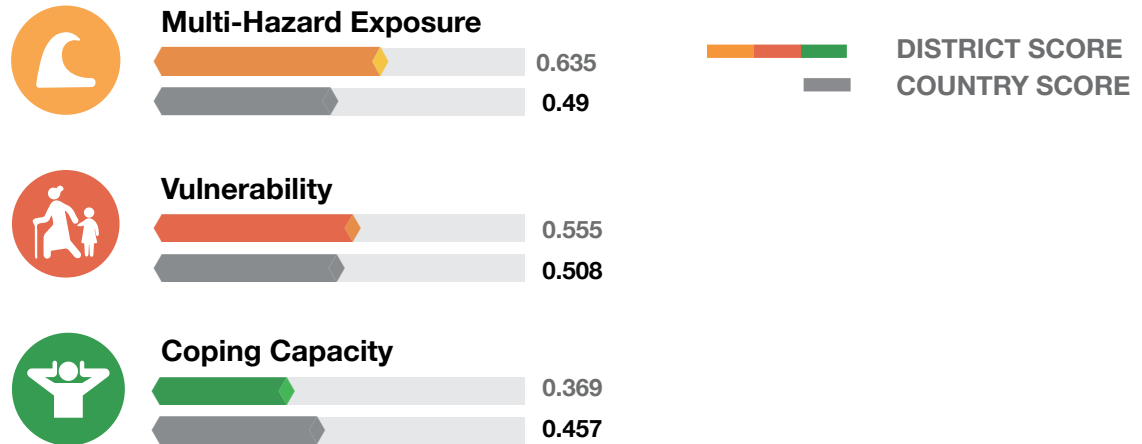
3 / 24

RANK WITHIN PROVINCES
Score: 0.607



Santiago del Estero's score and ranking are due to High Multi-hazard exposure combined with High Vulnerability and Very Low Coping Capacity scores.

Multi-hazard risk component scores compared to overall average country scores:



SANTIAGO DEL ESTERO RECOMMENDATIONS

1

Clean Water Access Vulnerability

Findings show that Santiago del Estero Province ranks 2nd highest in Argentina in Overall Clean Water Access Vulnerability. Over 24% of homes in Santiago del Estero Province do not have access to piped water, and 78% are not connected to sewer services. Invest in improved water and sanitation infrastructure to increase access to clean water and reduce health risks.

Findings show a high risk of drought and extreme heat in Santiago del Estero Province. Protect the agricultural sector by investing in infrastructure to promote water conservation and support farmers through training and education on drought resistant crop varieties and farming practices to reduce water stress and drought impacts.

The Province is also exposed to recurrent flooding. Educate and build preparedness among exposed communities on potential impacts of floods on fresh water and sanitation systems. Replace dated and unimproved water and sanitation infrastructure to reduce potential impacts and increase resilience.

2

Economic Constraints

Findings show that Santiago del Estero Province has the 4th highest overall Economic Constraints in Argentina, characterized by the country's 4th highest poverty rate (3.89%) combined with the 8th highest economic dependency ratio. Support new business opportunities to diversify livelihoods and generate prospects for equitable distribution of property and economic assets in the Province.

Consider long-term economic plans that both promote social benefits for elderly, low income, and single-parent households, and allocate the revenue required to balance the costs of these benefits.

Economic constraints in Santiago del Estero are closely linked to Information Access Vulnerability and vice versa. Removing economic barriers to education, and ensuring equitable access to schools, educational resources, and information technology will reduce vulnerability in the district.

SANTIAGO DEL ESTERO RECOMMENDATIONS

3

Energy Capacity

Santiago del Estero Province ranks 22nd in overall Energy Capacity, with 86% of households reporting connection to the electricity network, and 20% of households connected to the natural gas network. Focus development programs on increasing energy capacity by establishing sustainable power generation in underserved communities and extending the existing transmission and distribution network.

4

Communications Capacity

Findings show that Santiago del Estero Province ranks 22nd in the country in overall Communication Capacity. Just 24% of households have access to the internet – 3rd lowest in the country, and there are just 11 television subscriptions per 100 people. Pursue public-private partnerships to increase availability and affordability of internet and television communications.

While investing to diversify access to communication technology, officials should broadcast critical information and disaster warnings primarily via alternate media (such as radio) to keep the population informed and ensure that appropriate actions are taken. Santiago del Estero Province is exposed to drought, extreme temperature, wildfire, landslide, and flood hazards.

**Better solutions.
Fewer disasters.**

Safer world.

**1305 N Holopono Street
Suite 2, Kihei, HI 96753**

**P: (808) 891-0525
F: (808) 891-0526**



@PDC_Global



/PDCGlobal



www.pdc.prg



ndpba.arg@pdc.org