



ARGENTINA

SANTA FE

NDPBA PROVINCE PROFILE

ARGENTINA SANTA FE

CAPITAL: SANTA FE

Area: 133,097 km²

Santa Fe Province is located in the Central region of Argentina. This Province is divided into 19 Provinces, the Capital being Santa Fe. The Province borders the Provinces of Entre Ríos, Corrientes, Chaco, Santiago del Estero, Córdoba and Buenos Aires. The main economic sources are agriculture, livestock, ports (exportation) and manufacturing.



RISK AND VULNERABILITY COMPONENT SCORE



MULTI-HAZARD RISK (MHR) - High

Score: 0.592 • Rank: 5/24



RESILIENCE (R) - Moderate

Score: 0.49 • Rank: 12/24



MULTI-HAZARD EXPOSURE (MHE) - Very High

Score: 0.757 • Rank: 4/24



VULNERABILITY (V) - Moderate

Score: 0.541 • Rank: 12/24



COPING CAPACITY (CC) - High

Score: 0.52 • Rank: 6/24



Population (2018)

3,481,514



Population in Poverty

34.4%



Illiterate population

1.8%



Access to improved water

84.4%



Average life expectancy

75.1 years

*For more information on data and components please visit: <https://bit.ly/2LqVoUO>



MULTI-HAZARD EXPOSURE (MHE)

RANK: 4 / 24 PROVINCES
SCORE: 0.757

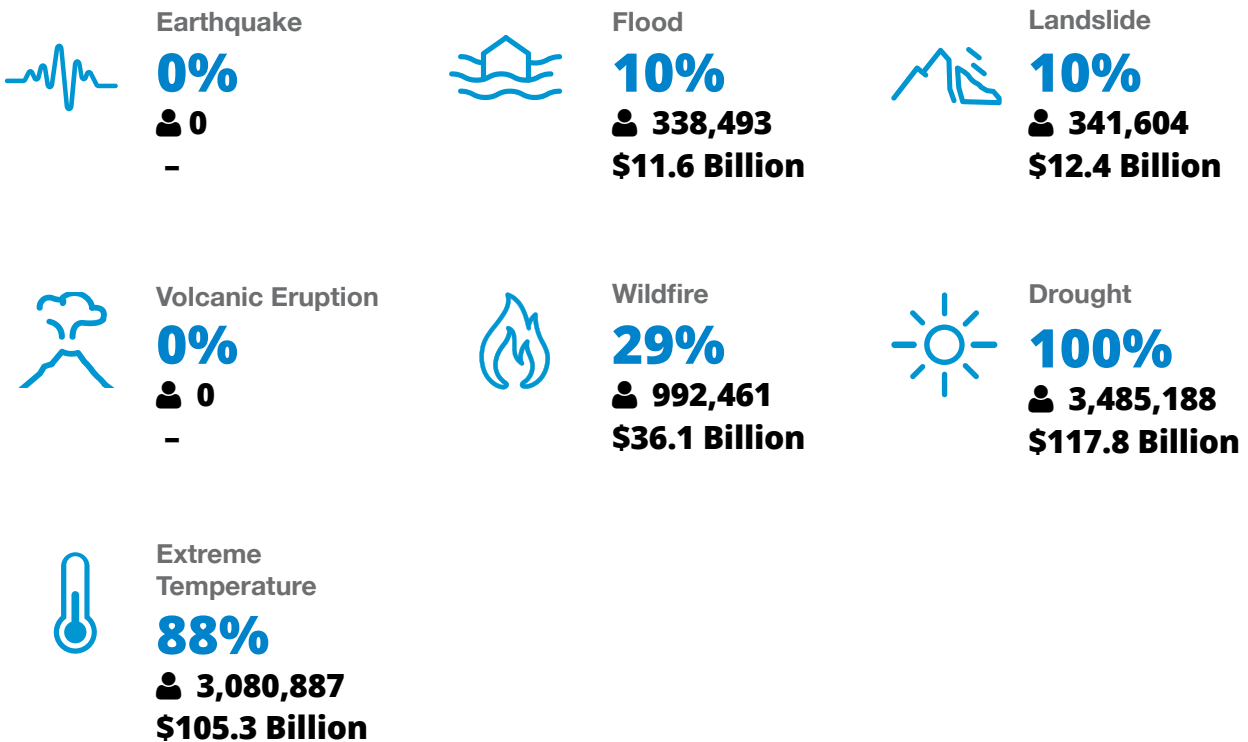


MHE
0.757

Raw MHE
0.706

Relative MHE
0.808

ESTIMATED POPULATION AND CAPITAL EXPOSED TO EACH HAZARD:





VULNERABILITY (V)

RANK: 12 / 24 PROVINCES ASSESSED
SCORE: 0.541

Vulnerability in Santa Fe is primarily driven by Gender Inequality and Environmental Stress. The bar chart indicates the socioeconomic themes contributing to the province's overall Vulnerability score.



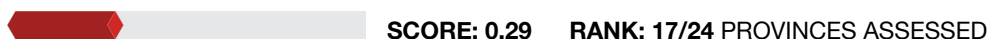
Environmental Stress



12.9% **9.8**
Land degradation Land affected by wildfire (per 100k ha)



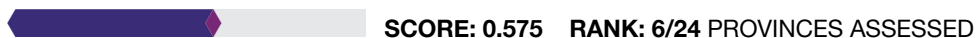
Vulnerable Health Status



75.1 **8.2** **1.6** **12.8%** **6** **16.6**
Life expectancy (years) Infant mortality rate (per 1,000 live births) Maternal mortality ratio Disability HIV incidence Tuberculosis incidence



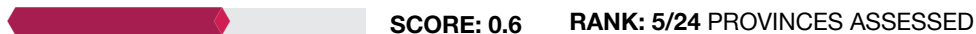
Clean Water Vulnerability



15.6% **49.7%**
Households without piped water Households without sewage services



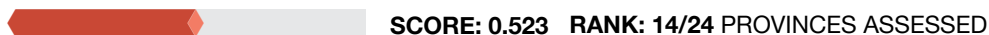
Information Access Vulnerability



1.8% **78.8%** **86.3%** **2.02**
Illiteracy Rate (Age 10+) Secondary education completion rate School enrollment Education investment per capita (million pesos)



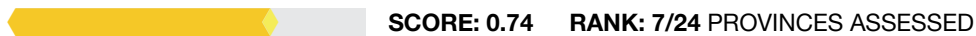
Economic Constraints



54.4 **5.9%** **34.4%**
Economic dependency ratio Unemployment rate Poverty rate



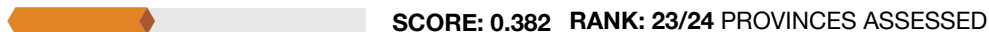
Gender Inequality



2.02 **40.1**
Female to male unemployment Female judiciary seats



Population Pressures



0.8%
Average Annual population change



COPING CAPACITY (CC)

RANK: 6 / 24 PROVINCES ASSESSED
SCORE: 0.52

Santa Fe exhibits weaker Coping Capacity in the areas of Governance and Disaster Management Capabilities. The bar chart indicates the socioeconomic themes contributing to the province's overall Coping Capacity score.



Economic Capacity

SCORE: 0.636 **RANK: 1/24 PROVINCES ASSESSED**

4037.8

Exports per capita (USD)

9.6%

Work insurance coverage

20.3

Tax distribution



Governance

SCORE: 0.442 **RANK: 20/24 PROVINCES ASSESSED**

18.5

Crime prevalence

79.5%

Voter participation



Environmental Capacity

SCORE: 0.180 **RANK: 20/24 PROVINCES ASSESSED**

6.8%

Protected area

13.9%

Forest cover



Infrastructure Capacity

SCORE: 0.639 **RANK: 4/24 PROVINCES ASSESSED**



Health Care Capacity

SCORE: 0.655 **RANK: 4/24 PROVINCES ASSESSED**

33.5

Hospital beds per 10,000 people

44.5

Physicians per 10,000 people

68.3%

Health insurance coverage

11.4

Average distance to nearest hospital (km²)



Transportation Capacity

SCORE: 0.689 **RANK: 4/24 PROVINCES ASSESSED**

0.32

Road density (km per sq. km)

15.8

Average distance to port (km)

97.6%

Proportion of roads improved



Communications Capacity

SCORE: 0.542 **RANK: 6/24 PROVINCES ASSESSED**

46.1%

Households with Internet

17.2%

Television subscriptions per 100 people



Energy Capacity

SCORE: 0.67 **RANK: 11/24 PROVINCES ASSESSED**

98.3%

Households with electricity

46.1%

Households with gas



Disaster Management Capabilities

SCORE: 0.514 **RANK: 7/24 PROVINCES ASSESSED**

21.4

Distance to fire station (km)

0.5

Shelters per 100k persons

49.7%

Radiobase access



RESILIENCE (R)

RANK: 12 / 24 PROVINCES
SCORE: 0.49

Santa Fe's score and ranking are due to Moderate Vulnerability combined with High Coping Capacity scores.

Below are the four thematic areas with the weakest relative scores:



Gender Inequality



Environmental Stress



Governance



Disaster Management Capabilities



HAZARD-SPECIFIC RISK (HSR)



Earthquake

RANK: 13 / 24 PROVINCES ASSESSED
SCORE: 0.000



Wildfire

RANK: 8 / 24 PROVINCES ASSESSED
SCORE: 0.341



Volcano

RANK: 9 / 24 PROVINCES ASSESSED
SCORE: 0.000



Flood

RANK: 7 / 24 PROVINCES ASSESSED
SCORE: 0.301



Landslide

RANK: 13 / 24 PROVINCES ASSESSED
SCORE: 0.191



Drought

RANK: 8 / 24 PROVINCES ASSESSED
SCORE: 0.482



Extreme Temperature

RANK: 4 / 24 PROVINCES ASSESSED
SCORE: 0.452



MULTI-HAZARD RISK (MHR)

5 / 24

RANK WITHIN PROVINCES
Score: 0.592



Santa Fe's score and ranking are due to Very High Multi-hazard exposure combined with Moderate Vulnerability and High Coping Capacity scores.

Multi-hazard risk component scores compared to overall average country scores:



Multi-Hazard Exposure



DISTRICT SCORE
COUNTRY SCORE



Vulnerability



Coping Capacity



SANTA FE RECOMMENDATIONS

1

Gender Inequality

Focus efforts to support equal labor participation by diversifying economic opportunities for women in the Province.

Promote social benefit programs that support single parents with children.

Encourage women to participate in the disaster management planning and decision-making process through inclusion community emergency brigades and representation in local government.

2

Environmental Stress

Focus on protecting environmental resources from degradation, and deforestation. These environmental stresses increase the likelihood of hazard events and have wider implications for negative impacts on health and livelihoods, decreasing resilience.

SANTA FE RECOMMENDATIONS

3

Governance

Focus on strengthening support for public security through increased law enforcement and surveillance, youth education and personal safety programs, and community support programs for ex-criminals.

Build civic participation at the community to increase public voice and accountability, building trust in government.

4

Disaster Management Capabilities

A massive volume of water flows through Santa Fe Province as it makes its way to the coast. Constant drainage causes recurring episodes of extreme flooding in the Province. Protección Civil in Santa Fe takes an active role in preparedness and mitigation, utilizing funds to successfully invest in flood mitigation infrastructure.

Encourage Secretaría de Protección Civil de la Provincia de Santa Fe to work with disaster managers in Provinces across to country, sharing best practices to identify and mitigate hazards.

**Better solutions.
Fewer disasters.**

Safer world.

**1305 N Holopono Street
Suite 2, Kihei, HI 96753**

**P: (808) 891-0525
F: (808) 891-0526**



@PDC_Global



/PDCGlobal



www.pdc.prg



ndpba.arg@pdc.org