



ARGENTINA

SANTA CRUZ

NDPBA PROVINCE PROFILE

ARGENTINA

SANTA CRUZ

CAPITAL: RÍO GALLEGOS

Area: 243,943 km²

Santa Cruz Province is located in the Patagonia region of Argentina. This Province is divided into 7 Provinces, the Capital being Santa Cruz. The Province borders Chile and the Province of Chubut. The main economic sources are petroleum, gas, mining and livestock.



RISK AND VULNERABILITY COMPONENT SCORE



MULTI-HAZARD RISK (MHR) - Very Low

Score: 0.35 • Rank: 24/24



RESILIENCE (R) - Moderate

Score: 0.494 • Rank: 11/24



MULTI-HAZARD EXPOSURE (MHE) - Very Low

Score: 0.037 • Rank: 24/24



VULNERABILITY (V) - Low

Score: 0.466 • Rank: 18/24



COPING CAPACITY (CC) - Moderate

Score: 0.455 • Rank: 14/24



Population (2018)

347,593



Population in Poverty

18.6%



Illiterate population

1.1%



Access to improved water

97.2%



Average life expectancy

75.3 years

*For more information on data and components please visit: <https://bit.ly/2LqVoUO>

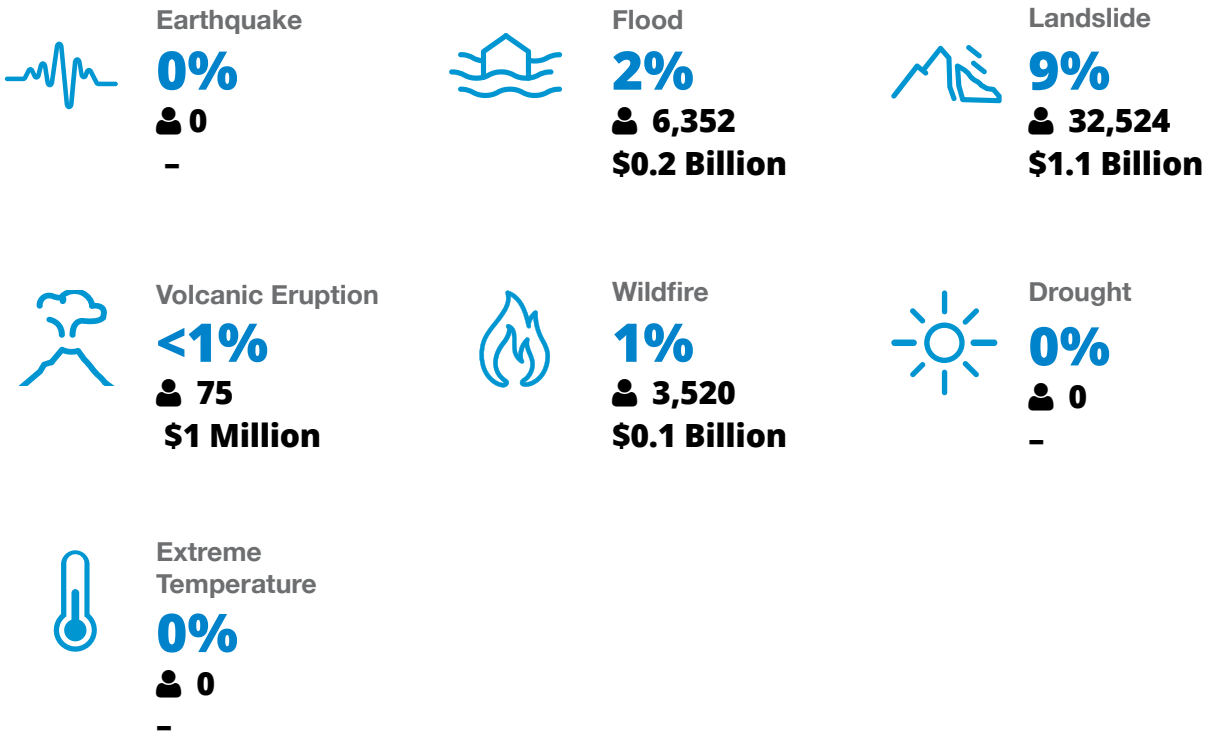


MULTI-HAZARD EXPOSURE (MHE)

RANK: 24 / 24 PROVINCES
SCORE: 0.037



ESTIMATED POPULATION AND CAPITAL EXPOSED TO EACH HAZARD:





VULNERABILITY (V)

RANK: 18 / 24 PROVINCES ASSESSED
SCORE: 0.466

Vulnerability in Santa Cruz is primarily driven by Population Pressures and Gender Inequality. The bar chart indicates the socioeconomic themes contributing to the province's overall Vulnerability score.



Environmental Stress

SCORE: 0.397 RANK: 21/24 PROVINCES ASSESSED

4.3% Land degradation
1.2 Land affected by wildfire (per 100k ha)



Vulnerable Health Status

SCORE: 0.353 RANK: 14/24 PROVINCES ASSESSED

75.3 Life expectancy (years)
9.2 Infant mortality rate (per 1,000 live births)
3.3 Maternal mortality ratio
11.7% Disability
18.5 HIV incidence
15.7 Tuberculosis incidence



Clean Water Vulnerability

SCORE: 0.143 RANK: 23/24 PROVINCES ASSESSED

2.8% Households without piped water
17.6% Households without sewage services



Information Access Vulnerability

SCORE: 0.523 RANK: 14/24 PROVINCES ASSESSED

1.1% Illiteracy Rate (Age 10+)
71.8% Secondary education completion rate
94.0% School enrollment
2.38 Education investment per capita (million pesos)



Economic Constraints

SCORE: 0.184 RANK: 24/24 PROVINCES ASSESSED

50.7 Economic dependency ratio
5.3% Unemployment rate
18.6% Poverty rate



Gender Inequality

SCORE: 0.661 RANK: 9/24 PROVINCES ASSESSED

1.89 Female to male unemployment
37.3 Female judiciary seats



Population Pressures

SCORE: 1 RANK: 1/24 PROVINCES ASSESSED

3.2% Average Annual population change



COPING CAPACITY (CC)

RANK: 14 / 24 PROVINCES ASSESSED
SCORE: 0.455

Santa Cruz exhibits weaker Coping Capacity in the areas of Transportation Capacity and Disaster Management Capabilities. The bar chart indicates the socioeconomic themes contributing to the province's overall Coping Capacity score.



Economic Capacity

SCORE: 0.547 **RANK: 4/24 PROVINCES ASSESSED**

6236.7 Exports per capita (USD)	0.6% Work insurance coverage	33.9 Tax distribution
---	--	---------------------------------



Governance

SCORE: 0.5 **RANK: 15/24 PROVINCES ASSESSED**

5.8 Crime prevalence	74.7% Voter participation
--------------------------------	-------------------------------------



Environmental Capacity

SCORE: 0,091 **RANK: 22/24 PROVINCES ASSESSED**

7.6% Protected area	2.1% Forest cover
-------------------------------	-----------------------------



Infrastructure Capacity

SCORE: 0.574 **RANK: 6/24 PROVINCES ASSESSED**



Health Care Capacity

SCORE: 0.475 **RANK: 11/24 PROVINCES ASSESSED**

35.6 Hospital beds per 10,000 people	34.3 Physicians per 10,000 people	83.1% Health insurance coverage	58.6 Average distance to nearest hospital (km ²)
--	---	---	--



Transportation Capacity

SCORE: 0.359 **RANK: 17/24 PROVINCES ASSESSED**

0.11 Road density (km per sq. km)	22.2 Average distance to port (km)	87.5% Proportion of roads improved
---	--	--



Communications Capacity

SCORE: 0.553 **RANK: 5/24 PROVINCES ASSESSED**

53.4% Households with Internet	14.8% Television subscriptions per 100 people
--	---



Energy Capacity

SCORE: 0.907 **RANK: 2/24 PROVINCES ASSESSED**

97.9% Households with electricity	94.9% Households with gas
---	-------------------------------------



Disaster Management Capabilities

SCORE: 0.359 **RANK: 15/24 PROVINCES ASSESSED**

66.2 Distance to fire station (km)	3.2 Shelters per 100k persons	36.0% Radiobase access
--	---	----------------------------------



RESILIENCE (R)

RANK: 11 / 24 PROVINCES
SCORE: 0.494

Santa Cruz's score and ranking are due to Low Vulnerability combined with Moderate Coping Capacity scores.

Below are the four thematic areas with the weakest relative scores:



Population Pressures



Gender Inequality



Transportation Capacity



Disaster Management Capabilities



HAZARD-SPECIFIC RISK (HSR)



Earthquake

RANK: 13 / 24 PROVINCES ASSESSED
SCORE: 0.000



Wildfire

RANK: 24 / 24 PROVINCES ASSESSED
SCORE: 0.000



Volcano

RANK: 7 / 24 PROVINCES ASSESSED
SCORE: 0.047



Flood

RANK: 22 / 24 PROVINCES ASSESSED
SCORE: 0.028



Landslide

RANK: 19 / 24 PROVINCES ASSESSED
SCORE: 0.071



Drought

RANK: 22 / 24 PROVINCES ASSESSED
SCORE: 0.000



Extreme Temperature

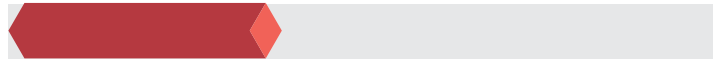
RANK: 14 / 24 PROVINCES ASSESSED
SCORE: 0



MULTI-HAZARD RISK (MHR)

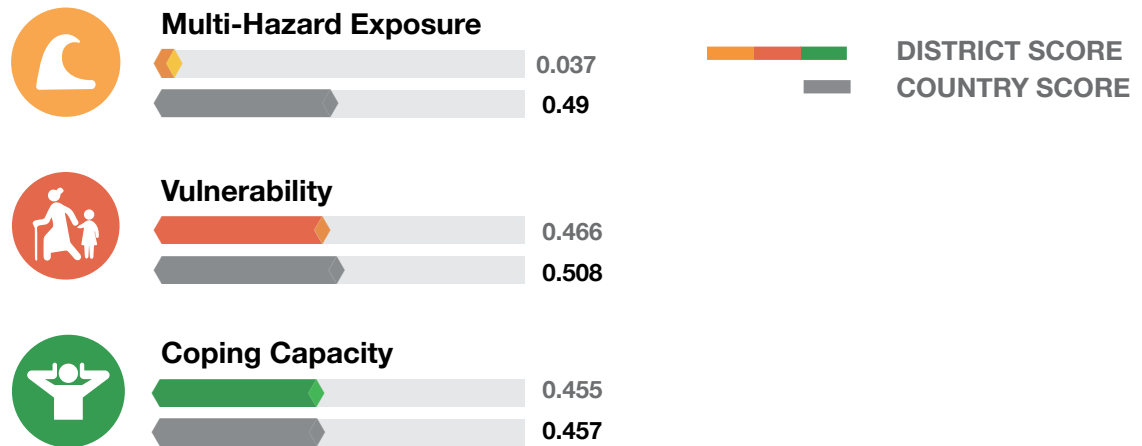
24 / 24

RANK WITHIN PROVINCES
Score: 0.35



Santa Cruz's score and ranking are due to Very Low Multi-hazard exposure combined with Low Vulnerability and Moderate Coping Capacity scores.

Multi-hazard risk component scores compared to overall average country scores:



SANTA CRUZ RECOMMENDATIONS

1

Population Pressures

Santa Cruz Province experienced the largest average annual population increase between 2010 and 2019 (3.2%). As population growth steadily increases, closely monitor development to prevent environmental stress and ensure that resource and infrastructure needs are met.

Incorporate multi-hazard mapping and risk assessment into land-use plans and zoning regulations to reduce and prevent development in hazard-prone areas of the Province.

2

Gender Inequality

Focus efforts to support equal labor participation by diversifying economic opportunities for women in the Province.

Promote social benefit programs that support single parents with children.

Encourage women to participate in the disaster management planning and decision-making process through inclusion community emergency brigades and representation in local government.

SANTA CRUZ RECOMMENDATIONS

3

Transportation Capacity

Low road network density may reduce the connectivity of people, goods, and services to the Santa Cruz Province during a disaster.

Invest in transportation infrastructure to facilitate the distribution of resources and services before, during, and after a disaster.

4

Disaster Management Capabilities

Pursue public-private partnerships to increase radiobase access to increase availability, security, and resilience of disaster communications.

Focus on building community and volunteer fire and emergency response corps. Identify government or external resources to conduct emergency services training and conduct Province-level exercise on a regular basis.

**Better solutions.
Fewer disasters.**

Safer world.

**1305 N Holopono Street
Suite 2, Kihei, HI 96753**

**P: (808) 891-0525
F: (808) 891-0526**



@PDC_Global



/PDCGlobal



www.pdc.prg



ndpba.arg@pdc.org