



ARGENTINA

SAN LUIS

NDPBA PROVINCE PROFILE

ARGENTINA SAN LUIS

CAPITAL: SAN LUIS

Area: 75,844 km²

San Luis Province is located in the Cuyo region of Argentina. This Province is divided into 9 Provinces, the Capital being San Luis. The Province borders the Provinces of Córdoba, La Pampa, Mendoza, San Juan and La Rioja. The main economic sources are agriculture, livestock, industrial production and tourism.



RISK AND VULNERABILITY COMPONENT SCORE



MULTI-HAZARD RISK (MHR) - Moderate

Score: 0.509 • Rank: 14/24



RESILIENCE (R) - High

Score: 0.515 • Rank: 6/24



MULTI-HAZARD EXPOSURE (MHE) - High

Score: 0.556 • Rank: 9/24



VULNERABILITY (V) - Moderate

Score: 0.512 • Rank: 14/24



COPING CAPACITY (CC) - Very High

Score: 0.543 • Rank: 4/24



Population (2018)

495,629



Population in Poverty

31.3%



Illiterate population

1.8%



Access to improved water

94.5%



Average life expectancy

76.1 years

*For more information on data and components please visit: <https://bit.ly/2LqVoUO>



MULTI-HAZARD EXPOSURE (MHE)

RANK: 9 / 24 PROVINCES
SCORE: 0.556

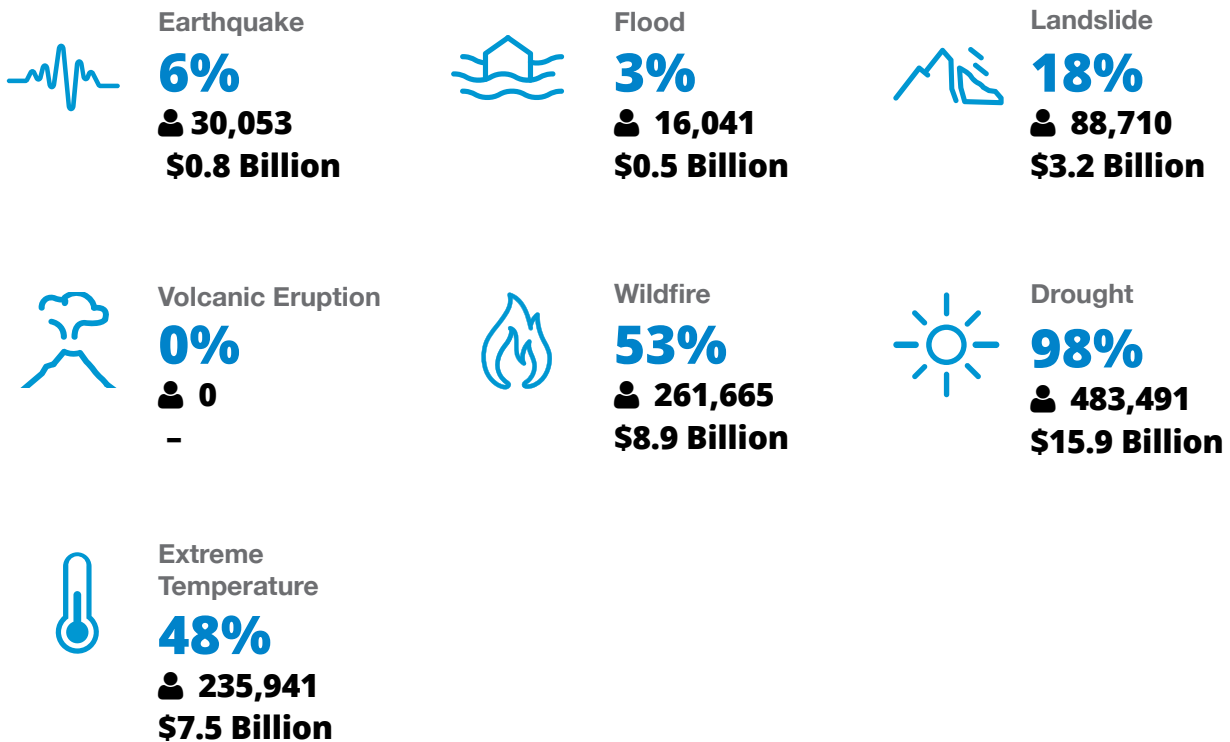


MHE
0.556

Raw MHE
0.348

Relative MHE
0.764

ESTIMATED POPULATION AND CAPITAL EXPOSED TO EACH HAZARD:





VULNERABILITY (V)

RANK: 14 / 24 PROVINCES ASSESSED
SCORE: 0.512

Vulnerability in San Luis is primarily driven by Gender Inequality and Economic Constraints. The bar chart indicates the socioeconomic themes contributing to the province's overall Vulnerability score.



Environmental Stress

SCORE: 0.507 RANK: 13/24 PROVINCES ASSESSED

9.2% **0.5**
Land degradation Land affected by wildfire (per 100k ha)



Vulnerable Health Status

SCORE: 0.389 RANK: 11/24 PROVINCES ASSESSED

76.1 **9.7** **6.7** **13.2%** **16.2** **6.7**
Life expectancy (years) Infant mortality rate (per 1,000 live births) Maternal mortality ratio Disability HIV incidence Tuberculosis incidence



Clean Water Vulnerability

SCORE: 0.331 RANK: 18/24 PROVINCES ASSESSED

5.5% **39.8%**
Households without piped water Households without sewage services



Information Access Vulnerability

SCORE: 0.411 RANK: 19/24 PROVINCES ASSESSED

1.8% **82.5%** **88.6%** **3.18**
Illiteracy Rate (Age 10+) Secondary education completion rate School enrollment Education investment per capita (million pesos)



Economic Constraints

SCORE: 0.592 RANK: 8/24 PROVINCES ASSESSED

53.7 **7.2%** **31.3%**
Economic dependency ratio Unemployment rate Poverty rate



Gender Inequality

SCORE: 0.778 RANK: 6/24 PROVINCES ASSESSED

2.21 **45.3**
Female to male unemployment Female judiciary seats



Population Pressures

SCORE: 0.579 RANK: 8/24 PROVINCES ASSESSED

1.4%
Average Annual population change



COPING CAPACITY (CC)

RANK: 4 / 24 PROVINCES ASSESSED
SCORE: 0.543

San Luis exhibits weaker Coping Capacity in the areas of Health Care Capacity and Communications Capacity. The bar chart indicates the socioeconomic themes contributing to the province's overall Coping Capacity score.



Economic Capacity

SCORE: 0.474 **RANK: 10/24 PROVINCES ASSESSED**

1153.7 Exports per capita (USD)	0.8% Work insurance coverage	36 Tax distribution
---	--	-------------------------------



Governance

SCORE: 0.802 **RANK: 1/24 PROVINCES ASSESSED**

8.1 Crime prevalence	81.5% Voter participation
--------------------------------	-------------------------------------



Environmental Capacity

SCORE: 0.395 **RANK: 11/24 PROVINCES ASSESSED**

5.6% Protected area	41.1% Forest cover
-------------------------------	------------------------------



Infrastructure Capacity

SCORE: 0.492 **RANK: 13/24 PROVINCES ASSESSED**



Health Care Capacity

SCORE: 0.351 **RANK: 19/24 PROVINCES ASSESSED**

26.9 Hospital beds per 10,000 people	32.8 Physicians per 10,000 people	60.4% Health insurance coverage	35.3 Average distance to nearest hospital (km ²)
--	---	---	--



Transportation Capacity

SCORE: 0.611 **RANK: 11/24 PROVINCES ASSESSED**

0.18 Road density (km per sq. km)	19.8 Average distance to port (km)	100.0% Proportion of roads improved
---	--	---



Communications Capacity

SCORE: 0.383 **RANK: 11/24 PROVINCES ASSESSED**

44.3% Households with Internet	10.7% Television subscriptions per 100 people
--	---



Energy Capacity

SCORE: 0.622 **RANK: 13/24 PROVINCES ASSESSED**

96.9% Households with electricity	52.9% Households with gas
---	-------------------------------------



Disaster Management Capabilities

SCORE: 0.469 **RANK: 9/24 PROVINCES ASSESSED**

56.5 Distance to fire station (km)	1.8 Shelters per 100k persons	47.1% Radiobase access
--	---	----------------------------------



RESILIENCE (R)

RANK: 6 / 24 PROVINCES
SCORE: 0.515

San Luis's score and ranking are due to Moderate Vulnerability combined with Very High Coping Capacity scores.

Below are the four thematic areas with the weakest relative scores:



Gender Inequality



Economic Constraints



Health Care Capacity



Communications Capacity



HAZARD-SPECIFIC RISK (HSR)



Earthquake

RANK: 7 / 24 PROVINCES ASSESSED
SCORE: 0.174



Wildfire

RANK: 6 / 24 PROVINCES ASSESSED
SCORE: 0.368



Volcano

RANK: 9 / 24 PROVINCES ASSESSED
SCORE: 0.000



Flood

RANK: 20 / 24 PROVINCES ASSESSED
SCORE: 0.080



Landslide

RANK: 16 / 24 PROVINCES ASSESSED
SCORE: 0.152



Drought

RANK: 10 / 24 PROVINCES ASSESSED
SCORE: 0.420



Extreme Temperature

RANK: 11 / 24 PROVINCES ASSESSED
SCORE: 0.285



MULTI-HAZARD RISK (MHR)

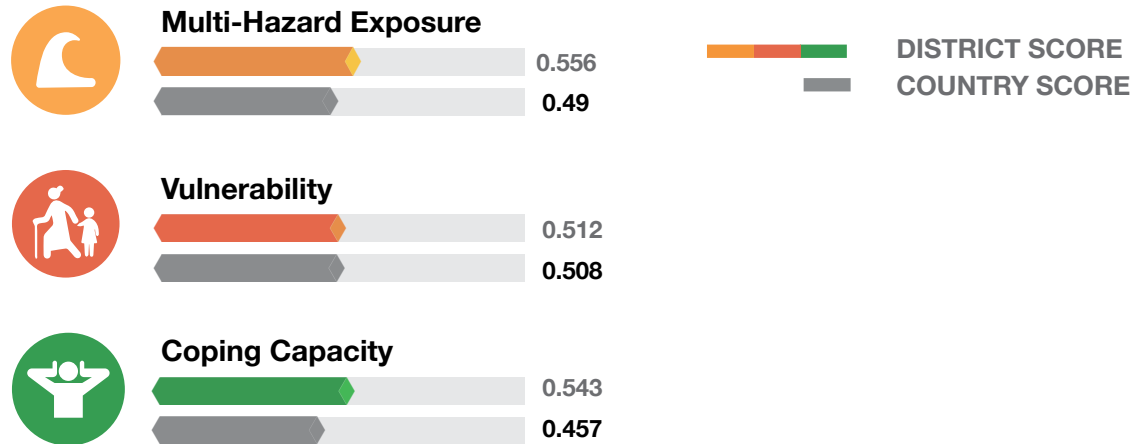
14 / 24

RANK WITHIN PROVINCES
Score: 0.509



San Luis's score and ranking are due to High Multi-hazard exposure combined with Moderate Vulnerability and Very High Coping Capacity scores.

Multi-hazard risk component scores compared to overall average country scores:



SAN LUIS RECOMMENDATIONS

1

Gender Inequality

Focus efforts to support equal labor participation by diversifying economic opportunities for women in the Province.

Promote social benefit programs that support single parents with children.

Encourage women to participate in the disaster management planning and decision-making process through inclusion community emergency brigades and representation in local government.

2

Economic Constraints

Findings show that San Luis Province has the 4th highest unemployment rate (7.2%) in Argentina. Support new business opportunities to diversify livelihoods and generate prospects for equitable distribution of property and economic assets in the Province.

SAN LUIS RECOMMENDATIONS

3

Health Care Capacity

Findings show that San Luis Province ranks 19th in overall Health Care Capacity. Reduce disparities in access to hospitals and medical services by ensuring equitable distribution of clinics and health services in rural and vulnerable communities.

4

Communications Capacity

San Luis Province ranks 11th in overall Communication Capacity. Pursue public-private partnerships to increase availability and affordability of internet and television communications.

While investing to diversify access to communication technology, officials should broadcast critical information and disaster warnings primarily via alternate media (such as radio) to keep the population informed and ensure that appropriate actions are taken. San Luis Province is exposed to drought, wildfire, extreme temperature, earthquake, landslide, and flood hazards.

**Better solutions.
Fewer disasters.**

Safer world.

**1305 N Holopono Street
Suite 2, Kihei, HI 96753**

**P: (808) 891-0525
F: (808) 891-0526**



@PDC_Global



/PDCGlobal



www.pdc.prg



ndpba.arg@pdc.org