



JAMAICA

NATIONAL DISASTER PREPAREDNESS BASELINE ASSESSMENT
PARISH PROFILE – PORTLAND

Portland: Risk

Portland ranks 7th out of 14 on the Multi-Hazard Risk Index with a score of **0.532**. Portland has moderate Multi-Hazard Exposure, moderate Vulnerability and high Coping Capacity (see Figure 1). The Parish ranks 8th in Multi-Hazard Exposure, 7th in Vulnerability, and 4^h in Coping Capacity.

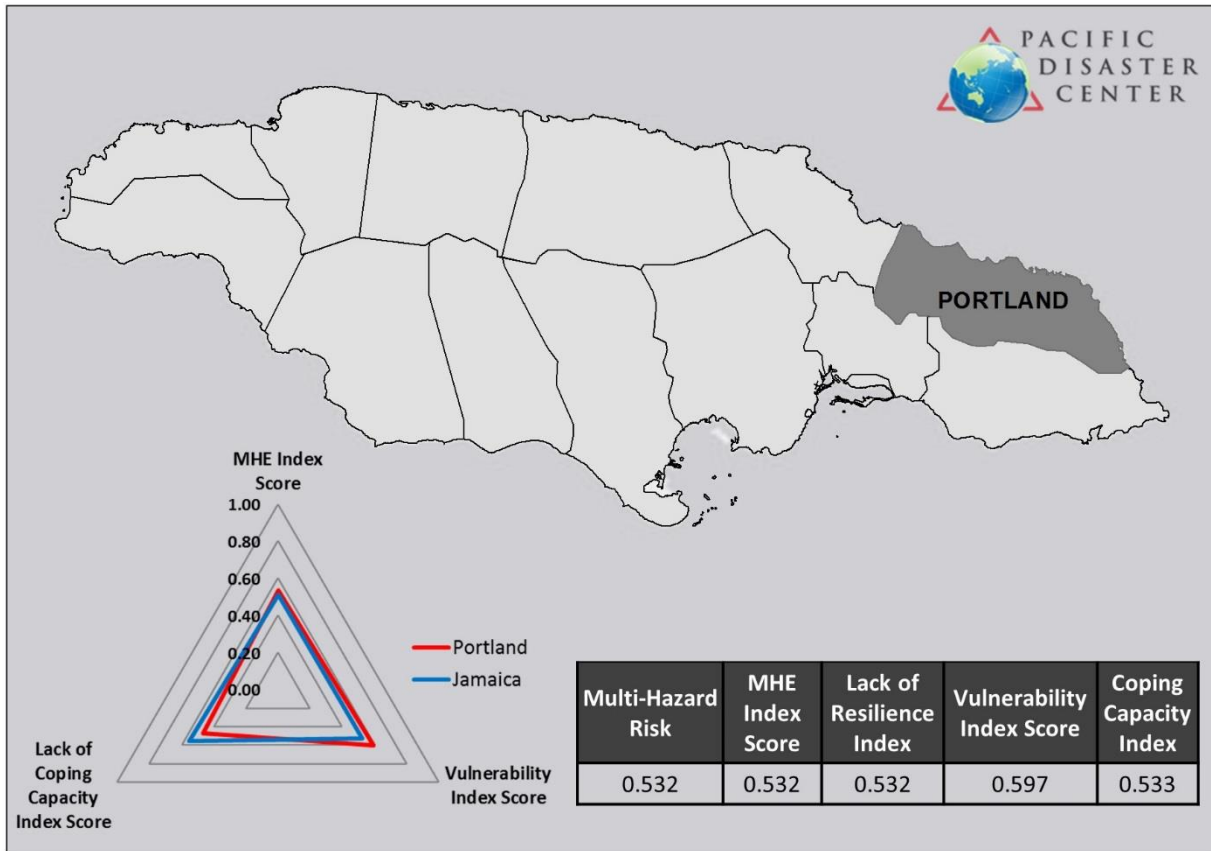


Figure 1. Risk scores for the parish of Portland

Portland: Lack of Resilience

Portland ranks **10th** of **14** on the Lack of Resilience Index with a score of **0.532** (see Table 1). Portland's score and ranking are due to its moderate Vulnerability combined with high Coping Capacity. The Parish ranks 7th in Vulnerability and 4th in Coping Capacity.

The three thematic areas with the weakest relative scores for the Parish of Portland are: **Economic Capacity, Information Access Vulnerability, and Recent Disaster Impacts.**

Table 1. Lack of Resilience Index and Component scores for Portland

Index	Portland	
	Score	Rank
Lack of Resilience	0.532	10
Components		
Vulnerability	0.597	7
Coping Capacity	0.533	4

Portland: Coping Capacity

Portland's Coping Capacity ranks **4th** out of **14** with a score of **0.533**. While overall coping capacity is relatively high in Portland, the index is influenced by an exceptionally weak score in the thematic area of **Economic Capacity**. Refer to Figure 2 and Table 2. This weakness may constrain Coping Capacity within the Parish.

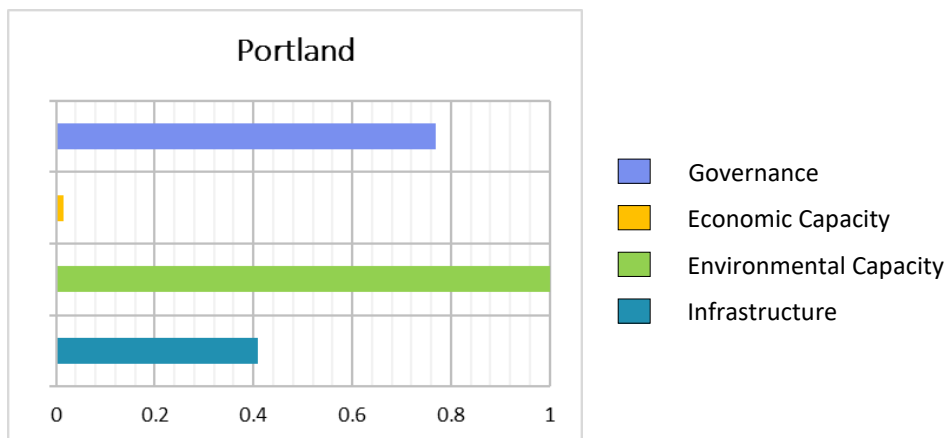


Figure 2. Coping Capacity subcomponents for Portland

Table 2. Coping Capacity Index, subcomponent and sub-index scores for Portland

Index	Portland	
	Score	Rank
Coping Capacity	0.533	4
Subcomponents		
Governance	0.768	1
Economic Capacity	0.015	14
Environmental Capacity	1.000	1
Infrastructure	0.408	8
Infrastructure Sub-indices		
Health Care	0.424	7
Transportation	0.203	12
Communications	0.597	5

Portland: Vulnerability

Portland ranks 7th out of 14 on the Vulnerability Index with a score of **0.597**. Vulnerability in Portland is strongly influenced by **Recent Disaster Impacts, Information Access Vulnerability, and Clean Water Vulnerability** subcomponent scores. See Table 3 and Figure 3.

Table 3. Vulnerability Index and subcomponent index scores for Portland

Index	Portland	
	Score	Rank
Vulnerability	0.597	7
Subcomponents		
Economic Constraints	0.543	7
Info Access Vulnerability	0.764	2
Vulnerable Health Status	0.490	7
Clean Water Vulnerability	0.705	9
Environmental Stress	0.430	9
Recent Disaster Impacts	0.787	2
Gender Inequality	0.459	12

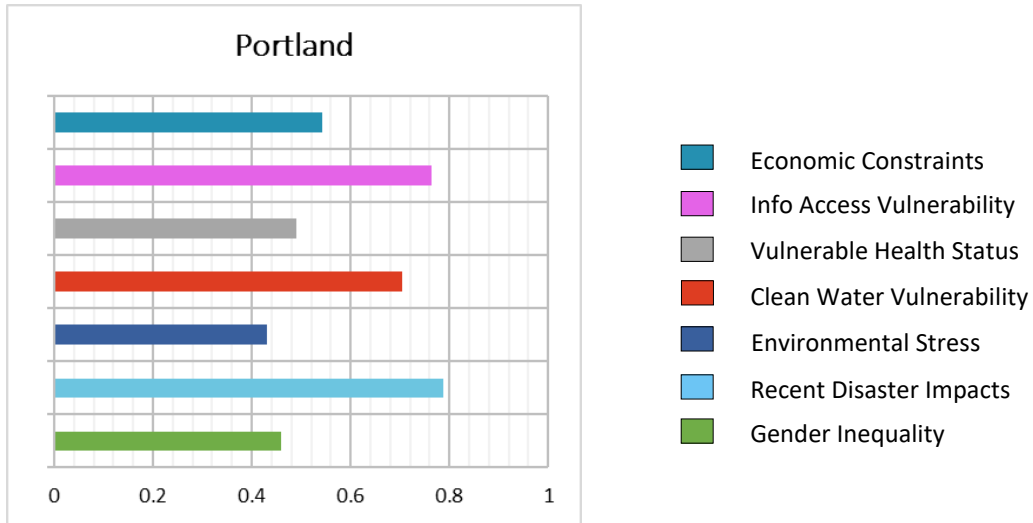


Figure 3. Vulnerability subcomponents for Portland

Portland: Multi-Hazard Exposure

Portland ranks 8th out of 14 on the Multi-Hazard Exposure Index with a score of 0.532 (see Table 4). A large proportion of Portland's population is exposed to **tropical cyclones, seismic activity, landslides, coastal flood, and inland flood**. See Figure 4 and Figure 5.

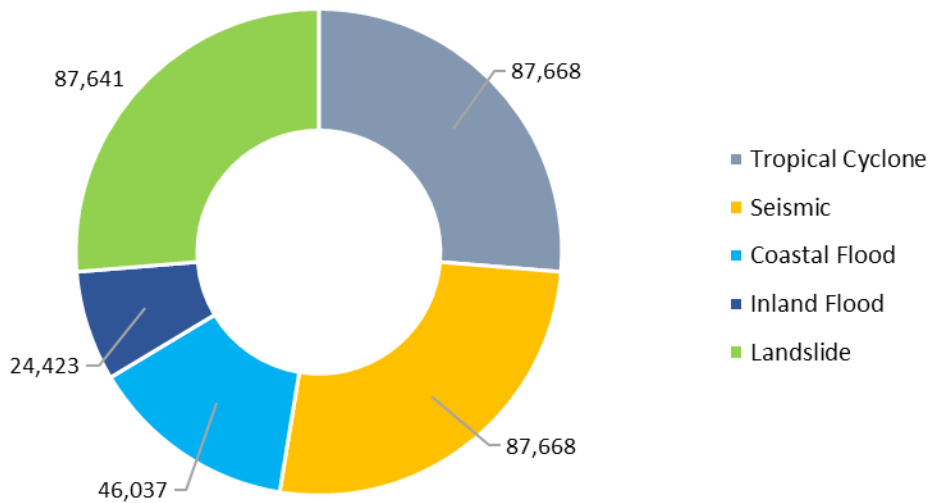


Figure 4. Raw population exposure by hazard type for Portland

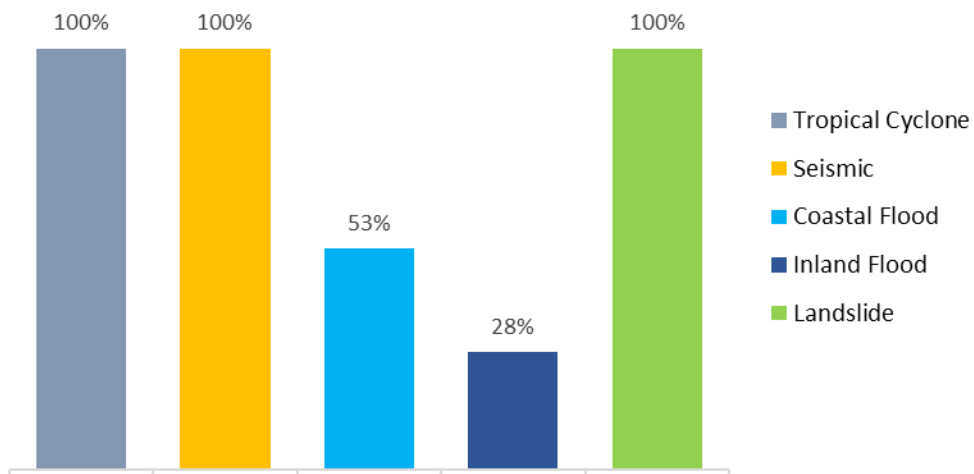


Figure 5. Percent population exposure to hazard type for Portland

Table 4. Multi-Hazard Exposure Index, Raw and Relative Exposure Index scores for Portland

Index	Portland	
	Score	Rank
Multi-Hazard Exposure	0.532	8
Subcomponents		
Raw Exposure	0.207	12
Relative Exposure	0.857	4