



ARGENTINA

LA RIOJA

NDPBA PROVINCE PROFILE

ARGENTINA LA RIOJA

CAPITAL: LA RIOJA

Area: 91,001 km²

La Rioja Province is located in the Cuyo region of Argentina. This Province is divided into 18 Provinces, the Capital being La Rioja. The Province borders Chile and the Provinces of Catamarca, Córdoba, San Luis and San Juan. The main economic sources are grape (wine), livestock and mining (uranium).



RISK AND VULNERABILITY COMPONENT SCORE



MULTI-HAZARD RISK (MHR) - Low

Score: 0.446 • Rank: 18/24



RESILIENCE (R) - High

Score: 0.501 • Rank: 9/24



MULTI-HAZARD EXPOSURE (MHE) - Low

Score: 0.339 • Rank: 18/24



VULNERABILITY (V) - Very Low

Score: 0.433 • Rank: 21/24



COPING CAPACITY (CC) - Low

Score: 0.436 • Rank: 18/24



Population (2018)

383,220



Population in Poverty

30.5%



Illiterate population

1.8%



Access to improved water

93.7%



Average life expectancy

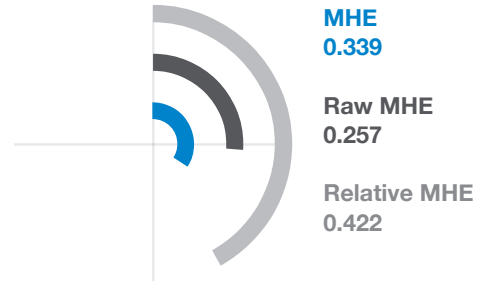
75.3 years

*For more information on data and components please visit: <https://bit.ly/2LqVoUO>

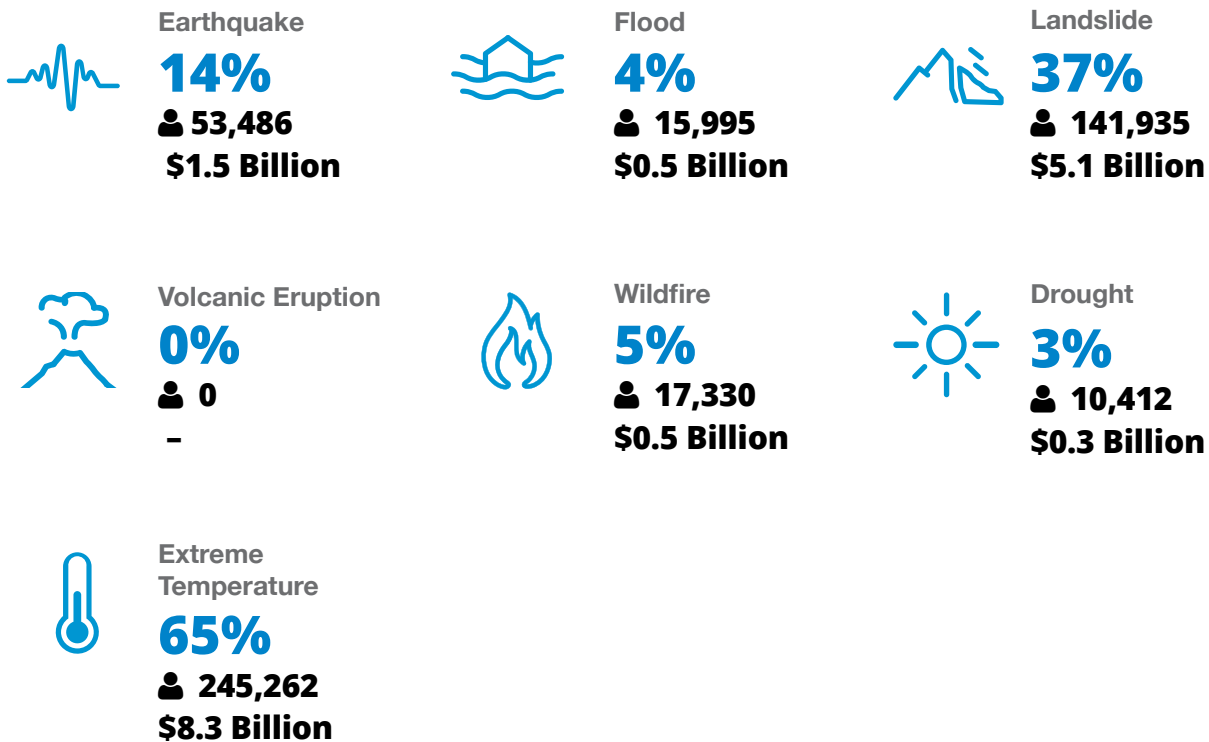


MULTI-HAZARD EXPOSURE (MHE)

RANK: 18 / 24 PROVINCES
SCORE: 0.339



ESTIMATED POPULATION AND CAPITAL EXPOSED TO EACH HAZARD:





VULNERABILITY (V)

RANK: 21 / 24 PROVINCES ASSESSED
SCORE: 0.433

Vulnerability in La Rioja is primarily driven by Population Pressures and Environmental Stress. The bar chart indicates the socioeconomic themes contributing to the province's overall Vulnerability score.



Environmental Stress

SCORE: 0.534 RANK: 12/24 PROVINCES ASSESSED

6.3% Land degradation
8.2 Land affected by wildfire (per 100k ha)



Vulnerable Health Status

SCORE: 0.447 RANK: 9/24 PROVINCES ASSESSED

75.3 Life expectancy (years)
9.4 Infant mortality rate (per 1,000 live births)
4.9 Maternal mortality ratio
17.1% Disability
3 HIV incidence
8.2 Tuberculosis incidence



Clean Water Vulnerability

SCORE: 0.402 RANK: 13/24 PROVINCES ASSESSED

6.3% Households without piped water
48.9% Households without sewage services



Information Access Vulnerability

SCORE: 0.255 RANK: 23/24 PROVINCES ASSESSED

1.8% Illiteracy Rate (Age 10+)
89.6% Secondary education completion rate
89.1% School enrollment
3.7 Education investment per capita (million pesos)



Economic Constraints

SCORE: 0.333 RANK: 21/24 PROVINCES ASSESSED

49.9 Economic dependency ratio
6.1% Unemployment rate
30.5% Poverty rate



Gender Inequality

SCORE: 0.473 RANK: 18/24 PROVINCES ASSESSED

1.86 Female to male unemployment
53.7 Female judiciary seats



Population Pressures

SCORE: 0.588 RANK: 7/24 PROVINCES ASSESSED

1.4% Average Annual population change



COPING CAPACITY (CC)

RANK: 18 / 24 PROVINCES ASSESSED
SCORE: 0.436

La Rioja exhibits weaker Coping Capacity in the areas of Communications Capacity and Transportation Capacity. The bar chart indicates the socioeconomic themes contributing to the province's overall Coping Capacity score.



Economic Capacity

SCORE: 0.392 **RANK: 18/24 PROVINCES ASSESSED**

560.5 Exports per capita (USD)	0.4% Work insurance coverage	38.5 Tax distribution
--	--	---------------------------------



Governance

SCORE: 0.697 **RANK: 5/24 PROVINCES ASSESSED**

10.8 Crime prevalence	80.8% Voter participation
---------------------------------	-------------------------------------



Environmental Capacity

SCORE: 0.173 **RANK: 21/24 PROVINCES ASSESSED**

7.7% Protected area	11.5% Forest cover
-------------------------------	------------------------------



Infrastructure Capacity

SCORE: 0.401 **RANK: 15/24 PROVINCES ASSESSED**



Health Care Capacity

SCORE: 0.68 **RANK: 3/24 PROVINCES ASSESSED**

50.3 Hospital beds per 10,000 people	40.9 Physicians per 10,000 people	61.9% Health insurance coverage	25.4 Average distance to nearest hospital (km ²)
--	---	---	--



Transportation Capacity

SCORE: 0.344 **RANK: 18/24 PROVINCES ASSESSED**

0.07 Road density (km per sq. km)	35.9 Average distance to port (km)	100.0% Proportion of roads improved
---	--	---



Communications Capacity

SCORE: 0.188 **RANK: 19/24 PROVINCES ASSESSED**

34.6% Households with Internet	6.7% Television subscriptions per 100 people
--	--



Energy Capacity

SCORE: 0.394 **RANK: 17/24 PROVINCES ASSESSED**

96.4% Households with electricity	14.4% Households with gas
---	-------------------------------------



Disaster Management Capabilities

SCORE: 0.37 **RANK: 14/24 PROVINCES ASSESSED**

62.8 Distance to fire station (km)	0.5 Shelters per 100k persons	50.0% Radiobase access
--	---	----------------------------------



RESILIENCE (R)

RANK: 9 / 24 PROVINCES
SCORE: 0.501

La Rioja's score and ranking are due to Very Low Vulnerability combined with Low Coping Capacity scores.

Below are the four thematic areas with the weakest relative scores:



Population Pressures



Environmental Stress



Communications Capacity



Transportation Capacity



HAZARD-SPECIFIC RISK (HSR)



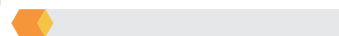
Earthquake



RANK: 6 / 24 PROVINCES ASSESSED
SCORE: 0.209



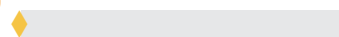
Wildfire



RANK: 21 / 24 PROVINCES ASSESSED
SCORE: 0.075



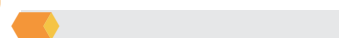
Volcano



RANK: 9 / 24 PROVINCES ASSESSED
SCORE: 0.000



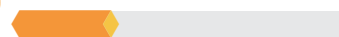
Flood



RANK: 19 / 24 PROVINCES ASSESSED
SCORE: 0.093



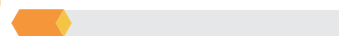
Landslide



RANK: 7 / 24 PROVINCES ASSESSED
SCORE: 0.266



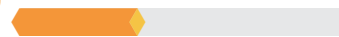
Drought



RANK: 18 / 24 PROVINCES ASSESSED
SCORE: 0.129



Extreme Temperature



RANK: 8 / 24 PROVINCES ASSESSED
SCORE: 0.343



MULTI-HAZARD RISK (MHR)

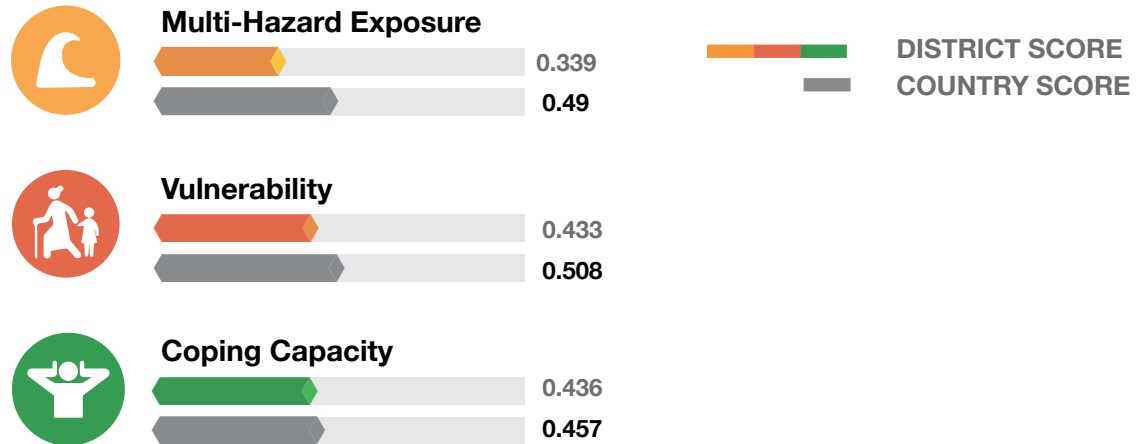
18 / 24

RANK WITHIN PROVINCES
Score: 0.446



La Rioja's score and ranking are due to Low Multi-hazard exposure combined with Very Low Vulnerability and Low Coping Capacity scores.

Multi-hazard risk component scores compared to overall average country scores:



LA RIOJA RECOMMENDATIONS

1

Population Pressures

La Rioja Province experienced the 7th largest average annual population increase between 2010 and 2019 (1.4%). As population growth steadily increases, closely monitor development to prevent environmental stress and ensure that resource and infrastructure needs are met.

Incorporate multi-hazard mapping and risk assessment into land-use plans and zoning regulations to reduce and prevent development in hazard-prone areas of the Province.

2

Environmental Stress

Focus on protecting environmental resources from degradation, and deforestation. These environmental stresses increase the likelihood of hazard events and have wider implications for negative impacts on health and livelihoods, decreasing resilience.

Focus mitigation efforts to prevent, respond to, and reduce the impact of wildfires.

LA RIOJA RECOMMENDATIONS

3

Communications Capacity

La Rioja ranks 19th in overall Communication Capacity. Just 35% of households have access to the internet, and there are just 7 television subscriptions per 100 people. Pursue public-private partnerships to increase availability and affordability of internet and television communications.

While investing to diversify access to communication technology, officials should broadcast critical information and disaster warnings primarily via alternate media (such as radio) to keep the population informed and ensure that appropriate actions are taken. La Rioja Province is exposed to extreme temperature, landslide, earthquake, flood and drought hazards.

4

Transportation Capacity

Findings show that La Rioja Province ranks 21st in Transportation Capacity. Low road network density combined with large average distances to the nearest airport may reduce the connectivity of people, goods, and services to the Province during a disaster.

Invest in transportation infrastructure to facilitate the distribution of resources and services before, during, and after a disaster.

**Better solutions.
Fewer disasters.**

Safer world.

**1305 N Holopono Street
Suite 2, Kihei, HI 96753**

**P: (808) 891-0525
F: (808) 891-0526**



@PDC_Global



/PDCGlobal



www.pdc.prg



ndpba.arg@pdc.org