



ARGENTINA

CORRIENTES

NDPBA PROVINCE PROFILE

ARGENTINA CORRIENTES

CAPITAL: CORRIENTES

Area: 88,972 km²

Corrientes Province is located in the Nordeste Argentino (NEA) region of Argentina. This Province is divided into 25 Provinces, the Capital being Corrientes. The Province borders Paraguay, Brazil, Uruguay and the Provinces of Misiones, Entre Ríos, Santa Fe and Chaco. The main economic sources are agriculture and livestock.



RISK AND VULNERABILITY COMPONENT SCORE



MULTI-HAZARD RISK (MHR) - Moderate

Score: 0.528 • Rank: 13/24



RESILIENCE (R) - Low

Score: 0.432 • Rank: 18/24



MULTI-HAZARD EXPOSURE (MHE) - Low

Score: 0.446 • Rank: 15/24



VULNERABILITY (V) - High

Score: 0.573 • Rank: 5/24



COPING CAPACITY (CC) - Low

Score: 0.437 • Rank: 17/24



Population (2018)

1,101,084



Population in Poverty

49.3%



Illiterate population

4.3%



Access to improved water

87.1%



Average life expectancy

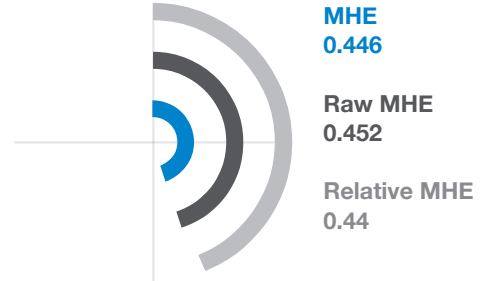
74.4 years

*For more information on data and components please visit: <https://bit.ly/2LqVoUO>

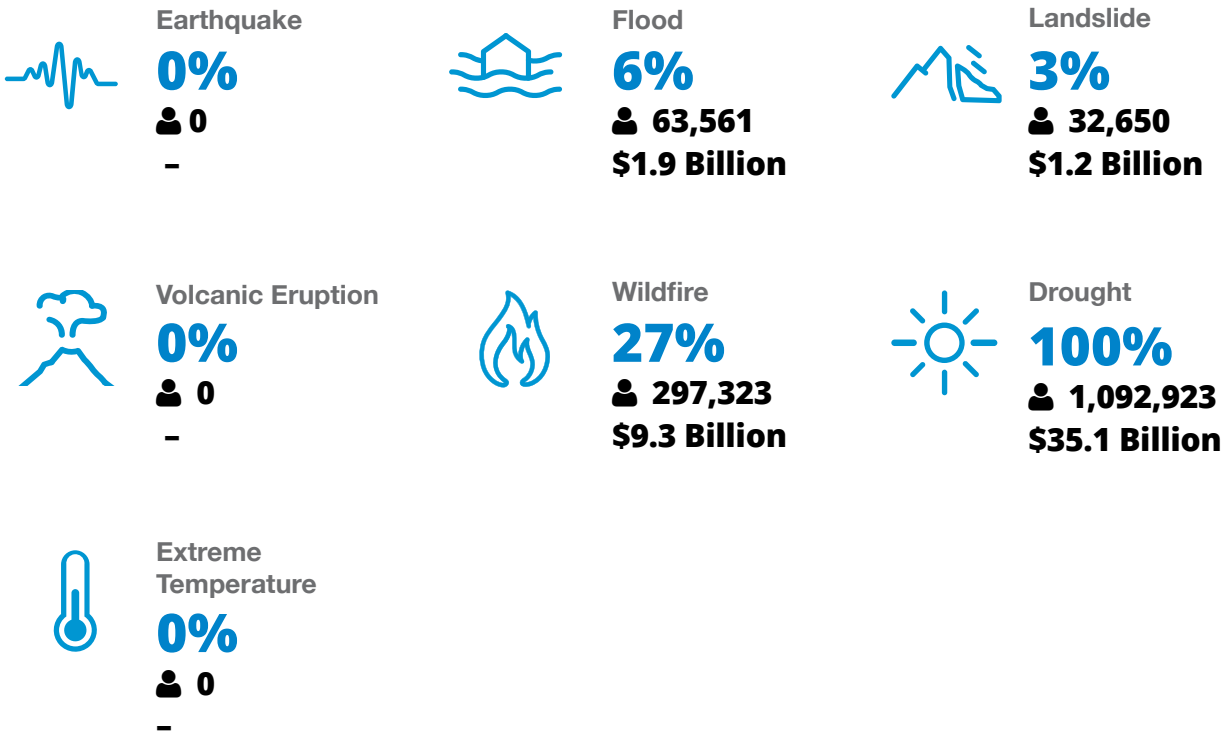


MULTI-HAZARD EXPOSURE (MHE)

RANK: 15 / 24 PROVINCES
SCORE: 0.446



ESTIMATED POPULATION AND CAPITAL EXPOSED TO EACH HAZARD:





VULNERABILITY (V)

RANK: 5 / 24 PROVINCES ASSESSED
SCORE: 0.573

Vulnerability in Corrientes is primarily driven by Economic Constraints and Environmental Stress. The bar chart indicates the socioeconomic themes contributing to the province's overall Vulnerability score.



Environmental Stress

SCORE: 0.625 RANK: 9/24 PROVINCES ASSESSED

8.1% **27.1**
Land degradation Land affected by wildfire (per 100k ha)



Vulnerable Health Status

SCORE: 0.534 RANK: 6/24 PROVINCES ASSESSED

74.4 **13.5** **4** **13.6%** **9.5** **18.7**
Life expectancy (years) Infant mortality rate (per 1,000 live births) Maternal mortality ratio Disability HIV incidence Tuberculosis incidence



Clean Water Vulnerability

SCORE: 0.507 RANK: 10/24 PROVINCES ASSESSED

12.9% **46.6%**
Households without piped water Households without sewage services



Information Access Vulnerability

SCORE: 0.616 RANK: 3/24 PROVINCES ASSESSED

4.3% **79.2%** **86.3%** **3.14**
Illiteracy Rate (Age 10+) Secondary education completion rate School enrollment Education investment per capita (million pesos)



Economic Constraints

SCORE: 0.708 RANK: 5/24 PROVINCES ASSESSED

56.2 **5.7%** **49.3%**
Economic dependency ratio Unemployment rate Poverty rate



Gender Inequality

SCORE: 0.581 RANK: 12/24 PROVINCES ASSESSED

1.91 **44.7**
Female to male unemployment Female judiciary seats



Population Pressures

SCORE: 0.441 RANK: 19/24 PROVINCES ASSESSED

1.0%
Average Annual population change



COPING CAPACITY (CC)

RANK: 17 / 24 PROVINCES ASSESSED
SCORE: 0.437

Corrientes exhibits weaker Coping Capacity in the areas of Energy Capacity and Communications Capacity. The bar chart indicates the socioeconomic themes contributing to the province's overall Coping Capacity score.



Economic Capacity

SCORE: 0.318 **RANK: 22/24** PROVINCES ASSESSED

196.2 Exports per capita (USD)	1.3% Work insurance coverage	25 Tax distribution
------------------------------------------	----------------------------------------	-------------------------------



Governance

SCORE: 0.68 **RANK: 6/24** PROVINCES ASSESSED

11.1 Crime prevalence	80.6% Voter participation
---------------------------------	-------------------------------------



Environmental Capacity

SCORE: 0.265 **RANK: 14/24** PROVINCES ASSESSED

16.4% Protected area	8.7% Forest cover
--------------------------------	-----------------------------



Infrastructure Capacity

SCORE: 0.378 **RANK: 16/24** PROVINCES ASSESSED



Health Care Capacity

SCORE: 0.415 **RANK: 17/24** PROVINCES ASSESSED

33.6 Hospital beds per 10,000 people	32.8 Physicians per 10,000 people	51.6% Health insurance coverage	22.9 Average distance to nearest hospital (km ²)
------------------------------------------------	---------------------------------------------	-------------------------------------------	------------------------------------------------------------------------



Transportation Capacity

SCORE: 0.65 **RANK: 8/24** PROVINCES ASSESSED

0.27 Road density (km per sq. km)	20.6 Average distance to port (km)	100.0% Proportion of roads improved
---------------------------------------------	----------------------------------------------	-----------------------------------------------



Communications Capacity

SCORE: 0.242 **RANK: 14/24** PROVINCES ASSESSED

33.6% Households with Internet	9.8% Television subscriptions per 100 people
------------------------------------------	--------------------------------------------------------



Energy Capacity

SCORE: 0.205 **RANK: 20/24** PROVINCES ASSESSED

94.5% Households with electricity	0.0% Households with gas
---------------------------------------------	------------------------------------



Disaster Management Capabilities

SCORE: 0.446 **RANK: 11/24** PROVINCES ASSESSED

26.5 Distance to fire station (km)	0.1 Shelters per 100k persons	50.4% Radiobase access
----------------------------------------------	-----------------------------------------	----------------------------------



RESILIENCE (R)

RANK: 18 / 24 PROVINCES
SCORE: 0.432

Corrientes's score and ranking are due to High Vulnerability combined with Low Coping Capacity scores.

Below are the four thematic areas with the weakest relative scores:



Economic Constraints



Environmental Stress



Energy Capacity



Communications Capacity



HAZARD-SPECIFIC RISK (HSR)



Earthquake

RANK: 13 / 24 PROVINCES ASSESSED
SCORE: 0.000



Wildfire

RANK: 11 / 24 PROVINCES ASSESSED
SCORE: 0.312



Volcano

RANK: 9 / 24 PROVINCES ASSESSED
SCORE: 0.000



Flood

RANK: 14 / 24 PROVINCES ASSESSED
SCORE: 0.193



Landslide

RANK: 20 / 24 PROVINCES ASSESSED
SCORE: 0.050



Drought

RANK: 5 / 24 PROVINCES ASSESSED
SCORE: 0.514



Extreme Temperature

RANK: 14 / 24 PROVINCES ASSESSED
SCORE: 0



MULTI-HAZARD RISK (MHR)

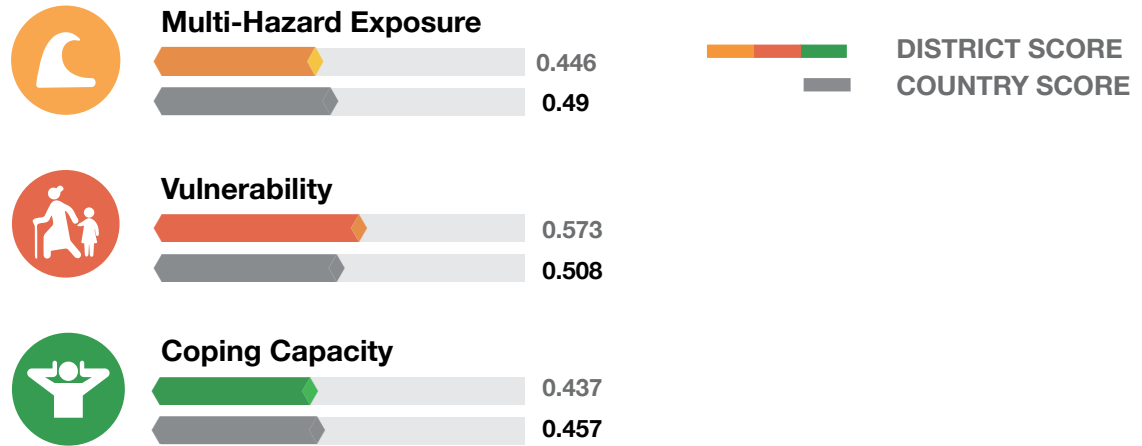
13 / 24

RANK WITHIN PROVINCES
Score: 0.528



Corrientes's score and ranking are due to Low Multi-hazard exposure combined with High Vulnerability and Low Coping Capacity scores.

Multi-hazard risk component scores compared to overall average country scores:



CORRIENTES RECOMMENDATIONS

1

Economic Constraints

Findings show that Corrientes Province has highest poverty rate in Argentina (49%) combined with a high economic dependency ratio (ratio of non-working age population to working age population). Support new business opportunities to diversify livelihoods and generate prospects for equitable distribution of property and economic assets in the Province.

Consider long-term economic plans that both promote social benefits for elderly, low income, and single-parent households, and allocate the revenue required to balance the costs of these benefits.

Economic constraints in Corrientes are closely linked to Information Access Vulnerability and vice versa. Removing economic barriers to education, and ensuring equitable access to schools, educational resources, and information technology will reduce vulnerability in the district.

2

Environmental Stress

Focus on protecting environmental resources from degradation, and deforestation. These environmental stresses increase the likelihood of hazard events and have wider implications for negative impacts on health and livelihoods, decreasing resilience.

CORRIENTES RECOMMENDATIONS

3

Energy Capacity

Corrientes Province ranks 20th in overall Energy Capacity, with 94% of households reporting connection to the electricity network, and 0 households connected to the natural gas network. Focus development programs on increasing energy capacity by establishing sustainable power generation in underserved communities and extending the existing transmission and distribution network.

4

Communications Capacity

Corrientes ranks 14th in overall Communication Capacity. Just 34% of households have access to the internet, and there are just 10 television subscriptions per 100 people. Pursue public-private partnerships to increase availability and affordability of internet and television communications.

While investing to diversify access to communication technology, officials should broadcast critical information and disaster warnings primarily via alternate media (such as radio) to keep the population informed and ensure that appropriate actions are taken. Corrientes Province is exposed to drought, wildfire, flood and landslide hazards.

**Better solutions.
Fewer disasters.**

Safer world.

**1305 N Holopono Street
Suite 2, Kihei, HI 96753**

**P: (808) 891-0525
F: (808) 891-0526**



@PDC_Global



/PDCGlobal



www.pdc.prg



ndpba.arg@pdc.org