



ARGENTINA

CIUDAD DE BUENOS AIRES

NDPBA PROVINCE PROFILE

ARGENTINA

CIUDAD DE BUENOS AIRES



CAPITAL:

Area: 211 km²

Ciudad de Buenos Aires is located in the Central region of Argentina. Also known as C.A.B.A. - Ciudad Autónoma de Buenos Aires (Autonomous City of Buenos Aires), it is the largest city in Argentina and the Capital of the country. The city borders with Uruguay and the Province of Buenos Aires. The city is the financial, industrial and commercial hub for the country.

RISK AND VULNERABILITY COMPONENT SCORE



MULTI-HAZARD RISK (MHR) - Low

Score: 0.491 • Rank: 16/24



RESILIENCE (R) - Very High

Score: 0.69 • Rank: 1/24



MULTI-HAZARD EXPOSURE (MHE) - Very High

Score: 0.854 • Rank: 2/24



VULNERABILITY (V) - Very Low

Score: 0.167 • Rank: 24/24



COPING CAPACITY (CC) - Very High

Score: 0.547 • Rank: 3/24



Population (2018)

3,068,043



Population in Poverty

12.6%



Illiterate population

0.5%



Access to improved water

99.6%



Average life expectancy

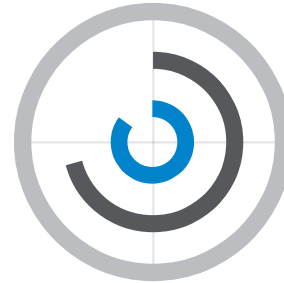
77.2 years

*For more information on data and components please visit: <https://bit.ly/2LqVoUO>



MULTI-HAZARD EXPOSURE (MHE)

RANK: 2 / 24 PROVINCES
SCORE: 0.854

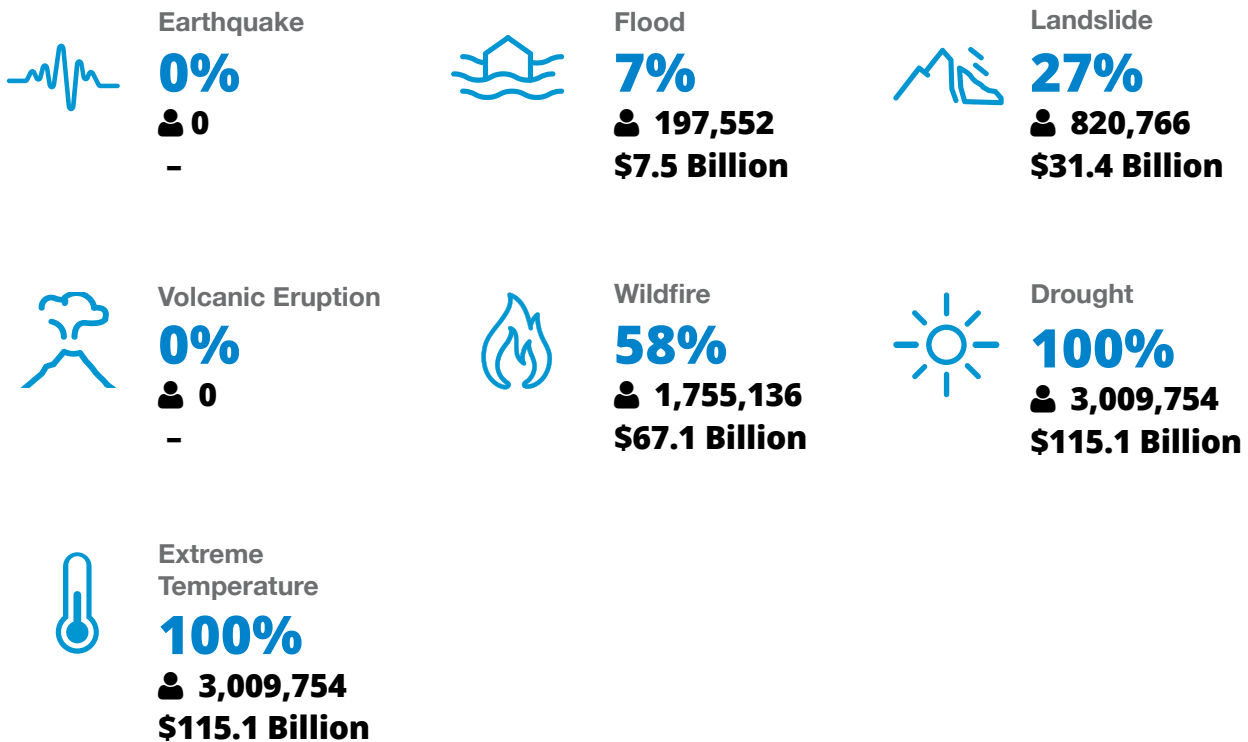


MHE
0.854

Raw MHE
0.708

Relative MHE
1

ESTIMATED POPULATION AND CAPITAL EXPOSED TO EACH HAZARD:





VULNERABILITY (V)

RANK: 24 / 24 PROVINCES ASSESSED
SCORE: 0.167

Vulnerability in Ciudad de Buenos Aires is primarily driven by Information Access Vulnerability and Economic Constraints. The bar chart indicates the socioeconomic themes contributing to the province's overall Vulnerability score.



Environmental Stress

SCORE: 0.155 RANK: 23/24 PROVINCES ASSESSED

3.2% **0**
Land degradation Land affected by wildfire (per 100k ha)



Vulnerable Health Status

SCORE: 0.226 RANK: 23/24 PROVINCES ASSESSED

77.2 **7.5** **1.5** **11.2%** **21.6** **34**
Life expectancy (years) Infant mortality rate (per 1,000 live births) Maternal mortality ratio Disability HIV incidence Tuberculosis incidence



Clean Water Vulnerability

SCORE: 0 RANK: 24/24 PROVINCES ASSESSED

0.4% **1.8%**
Households without piped water Households without sewage services



Information Access Vulnerability

SCORE: 0.321 RANK: 22/24 PROVINCES ASSESSED

0.5% **87.4%** **94.1%** **1.83**
Illiteracy Rate (Age 10+) Secondary education completion rate School enrollment Education investment per capita (million pesos)



Economic Constraints

SCORE: 0.262 RANK: 22/24 PROVINCES ASSESSED

56.5 **4.3%** **12.6%**
Economic dependency ratio Unemployment rate Poverty rate



Gender Inequality

SCORE: 0.205 RANK: 23/24 PROVINCES ASSESSED

1.52 **50**
Female to male unemployment Female judiciary seats



Population Pressures

SCORE: 0 RANK: 24/24 PROVINCES ASSESSED

0.1%
Average Annual population change



COPING CAPACITY (CC)

RANK: 3 / 24 PROVINCES ASSESSED
SCORE: 0.547

Ciudad de Buenos Aires exhibits weaker Coping Capacity in the areas of Governance and Economic Capacity. The bar chart indicates the socioeconomic themes contributing to the province's overall Coping Capacity score.



Economic Capacity



SCORE: 0.416 **RANK: 14/24 PROVINCES ASSESSED**

103.3

Exports per capita (USD)

25.3%

Work insurance coverage

12.4

Tax distribution



Governance



SCORE: 0.344 **RANK: 23/24 PROVINCES ASSESSED**

25.9

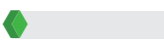
Crime prevalence

81.0%

Voter participation



Environmental Capacity



SCORE: 0,026 **RANK: 24/24 PROVINCES ASSESSED**

1.7%

Protected area

0.0%

Forest cover



Infrastructure Capacity



SCORE: 0.975 **RANK: 1/24 PROVINCES ASSESSED**



Health Care Capacity

SCORE: 0.995 **RANK: 1/24 PROVINCES ASSESSED**

72.3

Hopital beds per 10,000 people

131.2

Physicians per 10,000 people

82.3%

Health insurance coverage

3.3

Average distance to nearest hospital (km2)



Transportation Capacity

SCORE: 1 **RANK: 1/24 PROVINCES ASSESSED**

1.18

Road density (km per sq. km)

3.2

Average distance to port (km)

100.0%

Proportion of roads improved



Communications Capacity

SCORE: 0.92 **RANK: 2/24 PROVINCES ASSESSED**

69.4%

Households with Internet

26.4%

Television subscriptions per 100 people



Energy Capacity

SCORE: 0.985 **RANK: 1/24 PROVINCES ASSESSED**

99.5%

Households with electricity

92.2%

Households with gas



Disaster Management Capabilities



SCORE: 0.683 **RANK: 1/24 PROVINCES ASSESSED**

2.5

Distance to fire station (km)

0.1

Shelters per 100k persons

98.1%

Radiobase access



RESILIENCE (R)

RANK: 1 / 24 PROVINCES
SCORE: 0.69

Ciudad de Buenos Aires's score and ranking are due to Very Low Vulnerability combined with Very High Coping Capacity scores.

Below are the four thematic areas with the weakest relative scores:



Information Access Vulnerability



Economic Constraints



Governance



Economic Capacity



HAZARD-SPECIFIC RISK (HSR)



Earthquake

RANK: 13 / 24 PROVINCES ASSESSED
SCORE: 0.000



Wildfire

RANK: 13 / 24 PROVINCES ASSESSED
SCORE: 0.293



Volcano

RANK: 9 / 24 PROVINCES ASSESSED
SCORE: 0.000



Flood

RANK: 15 / 24 PROVINCES ASSESSED
SCORE: 0.146



Landslide

RANK: 14 / 24 PROVINCES ASSESSED
SCORE: 0.187



Drought

RANK: 12 / 24 PROVINCES ASSESSED
SCORE: 0.292



Extreme Temperature

RANK: 9 / 24 PROVINCES ASSESSED
SCORE: 0.292



MULTI-HAZARD RISK (MHR)

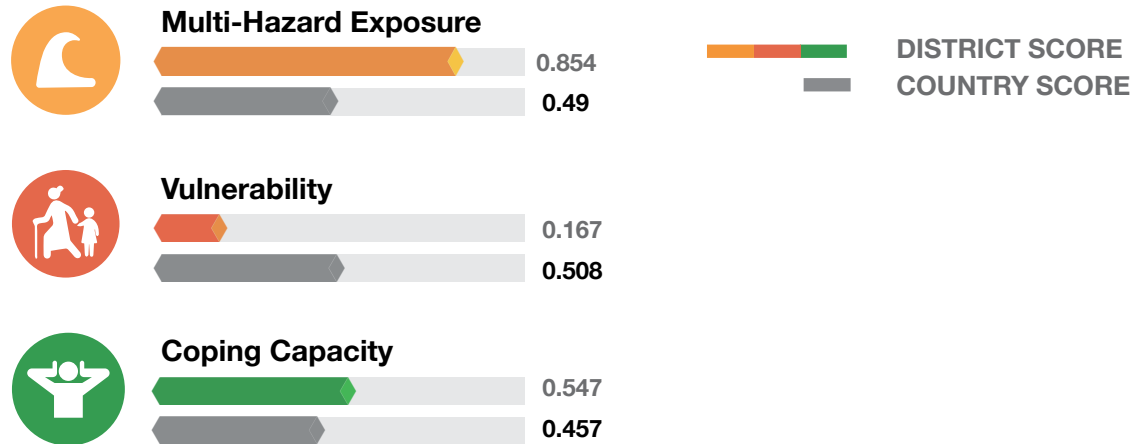
16 / 24

RANK WITHIN PROVINCES
Score: 0.491



Ciudad de Buenos Aires's score and ranking are due to Very High Multi-hazard exposure combined with Very Low Vulnerability and Very High Coping Capacity scores.

Multi-hazard risk component scores compared to overall average country scores:



CIUDAD DE BUENOS AIRES RECOMMENDATIONS

1

Information Access Vulnerability

Though overall access to information is very low in CABA, findings show that the city has the lowest per capita investment in education (Financiamiento Educativo Ley No. 26.075). Ensure equitable support for public education in CABA, including human and instructional resources as well as education infrastructure.

2

Economic Constraints

CABA has the 6th highest economic dependency ratio (ratio of non-working age population to working age population). Consider long-term economic plans that both promote social benefits for elderly, low income, and single-parent households, and allocate the revenue required to balance the costs of these benefits.

Promote workforce opportunities for young women and immigrants to help stimulate economic growth and reduce economic dependency.

CIUDAD DE BUENOS AIRES RECOMMENDATIONS

3

Governance

Findings show that CABA has the 3rd highest crime prevalence in Argentina. Focus on strengthening support for public security through increased law enforcement and surveillance, youth education and personal safety programs, and community support programs for ex-criminals.

4

Economic Capacity

CABA ranks 14th in Overall Economic Capacity, driven by the second lowest value of exports per capita (\$103 USD), as well as second lowest tax distribution per capita (\$12.4 thousand).

Continue to encourage programs that diversify the economy in CABA to generate public revenue, increase household incomes, and support small businesses.

**Better solutions.
Fewer disasters.**

Safer world.

**1305 N Holopono Street
Suite 2, Kihei, HI 96753**

**P: (808) 891-0525
F: (808) 891-0526**



@PDC_Global



/PDCGlobal



www.pdc.prg



ndpba.arg@pdc.org